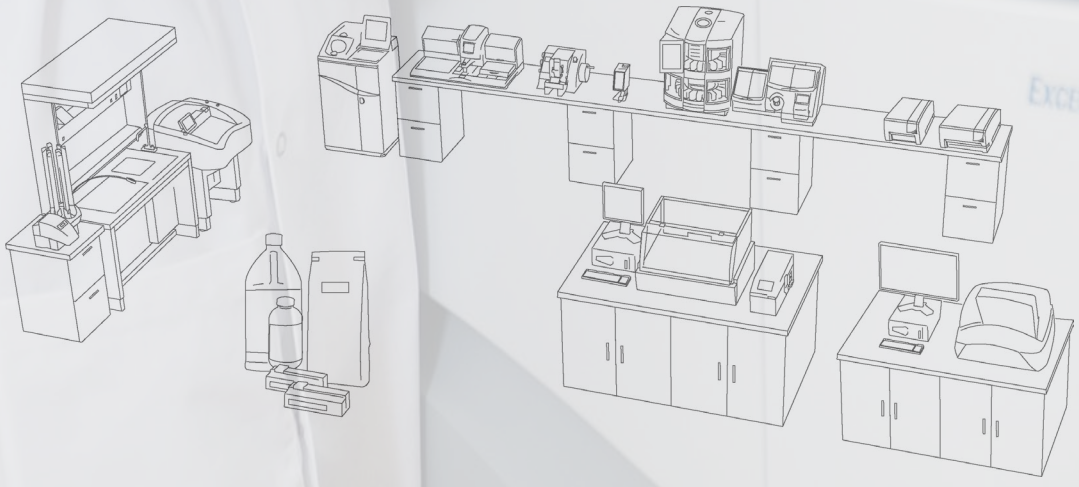


Tissue Processing and Embedding

consistency
in quality



Consistent, high quality tissue processing

Tissue processing is the foundation to producing reliable results in the Histology laboratory. EpreDia tissue processing solutions are designed to efficiently produce high quality paraffin blocks that enable Pathologists to make an accurate diagnosis.

Quality

- Round chamber design to help increase the efficiency of fluid movement (Revos™ tissue processor and Excelsior™ tissue processor only)
- Baskets designed with cassette spacers to allow fluid to easily move in and out of each cassette

Safety

- Downdraft ventilation helps to reduce exposure to harmful and toxic fumes
- Two forms of filtration to handle common reagents (xylene, alcohol, and formalin)
- Unique reagent management design eliminates the need to transfer reagents into secondary vessels

The Total Solution

- Syntri Safeguard consumables, in conjunction with the Revos tissue processor, use RFID technology to track and log reagent usage, helping facilitate the most efficient and safe use of reagents
- Get peace of mind with EpreDia extended service contracts that include preventative maintenance and thorough, expedited repairs, ensuring minimal downtime in your laboratory





Revos Tissue Processor

Laboratories are under increasing pressure to speed up processes, reduce costs, and eliminate errors. The Revos™ tissue processor is expressly designed to help overcome these challenges.

Rapid Processing

- Unique, canted chamber enhances the distribution of reagent, reduces tissue processing time, and allows for high-quality processing results

Intelligent Monitoring

- The instrument's intelligent reagent monitoring system tracks and logs reagent usage
- System remembers every bottle loaded, protocol executed, and service performed – allowing laboratories to use reagents more efficiently

Safety and Protection

- Dual-filtration system and down-draft ventilation help protect laboratory staff by controlling both solvent and formalin fumes
- Be ready for unexpected power outages – the on-board battery backup system keeps your samples safe and protocols active for up to three hours

Syntri Enabled

- Syntri Safeguard technology enables the instrument to sense where the 100% processing alcohol is loaded in the system and prevents incorrect replenishment

Enhanced Serviceability

- Advanced remote diagnostic capabilities are available to help minimize downtime and keep your lab running

Physical Specifications

Dimensions (D x W x H):
22.8 x 33.4 x 54 in.
(58 x 85 x 137 cm)

Weight:
363 lbs / 165 kg

Power Requirements

100-240 V, 50-60 Hz

Description	Order Number
Revos tissue processor	A84100001
Revos tissue processor (US version)	A84100001ATC

Accessories	Order Number
Formaldehyde (potassium permanganate) filter, 6 / pk	B9990612CS
Charcoal filter, 6 / pk	7411258
Downdraft extraction duct adapter kit	A84110045
Main air system duct adapter kit	A78410024
Storage bottles (5L); 6 / pk	A788410026
Waste wax drawer; 5 / pk	8300
Organized basket, 6 / pk	A84110031
Mega basket, 6 / pk	A84110032
Level sensor cleaning pad	A78410095



5 Liter Reagents – Syntri Safeguard

The accuracy of patient tests often hinges upon proper preparation and consistency in processes throughout the laboratory. When paired with Syntri Service and reagents featuring Syntri Safeguard RFID technology, the Revos tissue processor tracks and logs reagent usage through the Cloud. It remembers every bottle loaded, protocol executed and service performed – helping to reduce downtime and facilitating efficient use of reagents.

You'll need:





Excelsior AS Tissue Processor

When time and money are short, the Excelsior AS™ tissue processor helps overcome these challenges while reducing exposure to hazardous chemicals.

Enhanced tissue quality

- Cassette baskets are gently rotated inside the circular chamber, providing more effective agitation than an impeller
- Reagents can be preheated to up to 35 °C, minimizing tissue shock and facilitating reagent penetration
- Baskets can be used for microwave secondary fixation

Significant reagent cost savings

- By directly measuring the alcohol quality during every run, reagents can be replaced when completely exhausted, reducing waste
- Automatic reagent rotation further extends reagent life using a proven system
- Direct quality measurement and automatic rotation together can lead to reagent savings of 75% or more

Versatile, Efficient Workflow

- Reduce maintenance time by replacing one bottle of each reagent rather than all of them
- New reagents are drawn directly into the processor from the supplier's bottles. No pouring – no mess – no fumes
- Run rapid biopsies during the day and conventional programs overnight

Safe for the tissue – safe for the operator

- When the chamber is opened, a downdraft fan pulls fumes through a filter to protect users from chemical exposure
- Fumes from the cabinet are extracted through filters to protect users from alcohol, xylene, and formaldehyde
- Remove waste paraffin by simply discarding a plastic tray – no paraffin spillage and burns
- Battery back-up protects against power outages
- Compatible with IPA xylene-free processes as well as conventional reagents

Physical Specifications

Dimensions (D x W x H):
23 x 28 x 54 in.
(58 x 71 x 137 cm)

Weight: 363 lbs / 165 kg

Power Requirements

100-240 V, 50-60 Hz

Includes

Basic instrument, reagent vessels, wax baths, processing basket(s), two charcoal filters and instruction manual.

Simple to learn and operate

- The all-new touch screen interface is intuitive and easy to learn
- With intelligent software, it is easier to avoid mistakes that affect tissue quality
- Engineered for reliability and peace of mind



Description	Order Number
Excelsior AS tissue processor	A8230001

Accessories	Order Number
Formaldehyde (potassium permanganate) filter, 6 / pk	B9990612CS
Charcoal filter, 6 / pk	7411258
Plastic basket - carrying container, 4 L	B35210007
Reagent bottles (front cabinet), 5 L, 6 / pk	A78410026
Downdraft extraction duct adapter kit	A78410023
Main air system duct adapter kit	A78410024

You'll need:





STP 120 Spin Tissue Processor

The STP 120 tissue processor is designed to process biological specimens from chemical fixation to wax infiltration. Its unique design uses programmable, gentle centrifugal force to augment the normal vertical agitation process associated with carousel processors.

Customizable for Your Lab

- Immediate and delayed-start processing modes so you can process tissues when it's most convenient
- Cassette baskets spin counterclockwise and clockwise within reagent container to improve processing
- Customizable spin speeds and programmable immersion time in each station to accommodate a variety of specimen types
- Microprocessor unit can maintain up to ten processing programs to save on programming time
- Basket holds up to 120 cassettes
- Save money by reducing reagent carryover through centrifugal spinning of the basket above the reagent vessel

Focused on Safety

- Reagent vessel covers and charcoal-enhanced ventilation help control processing vapors for user safety

Physical Specifications

Dimensions:

Diameter: 33.5 in. (85 cm)

Height: 19.7 - 27.6 in. (50-70 cm)

Weight: 154.3 lbs / 70 kg

Power Requirements

100-120 V, 50/60 Hz, 1.7A

220-240 V, 50/60 HA, 0.9A

Includes

Ventilation system, paraffin baths, and processing basket

Description	Order Number
STP 120 Spin tissue processor with two wax baths and processing basket	813150
STP 120 Spin tissue processor with three wax baths and two processing baskets	813160

You'll need:



specimen collection



paraffin



five liter reagents



fixation products



dehydrants and clearants



cassettes

Specimen and Grossing Containers

Specimen and grossing containers provide convenient fixation of tissue specimens. Designed to be used at full strength and should not require any additives. Made of clear polystyrene or clear polypropylene. Allow for 15 to 20 times the volume of fixation fluid to volume of specimen. Packed in handpacks and/or trays.

Description	Qty.	Order Number
Richard-Allan Scientific Prefilled Containers		
10% NBF 20 mL jar	192 / case	59201
10% NBF 40 mL jar	96 / case	51401
10% NBF 40 mL jar	168 / case	59401
10% NBF 60 mL jar	96 / case	51601
10% NBF 60 mL jar	126 / case	59601
10% NBF 90 mL jar	100 / case	56901
10% NBF 90 mL jar	120 / case	59901
10% NBF 120 mL jar	90 / case	591201
10% NBF 120 mL jar	96 / case	511201
10% Zinc Formalin 20 mL jar	192 / case	59201ZF
10% Zinc Formalin 20 mL jar with prostate kit #59201	192 / case	29012
10% Zinc Formalin 40 mL jar	168 / case	59401ZF
10% Zinc Formalin 60 mL jar	126 / case	59601ZF
10% Zinc Formalin 90 mL jar	120 / case	51901
10% Zinc Formalin 120 mL jar	90 / case	591201ZF
Richard-Allan Scientific Dry Containers		
Dry container 20 mL	284 / case	59202
Dry container 40 mL	216 / case	59402
Dry container 60 mL	150 / case	59602
Dry container 60 mL	150 / case	53602
Dry container 90 mL	125 / case	59902
Dry container 120 mL	100 / case	531202
Dry container 120 mL	100 / case	591202

Description	Qty.	Order Number
Richard-Allan Scientific Signature Series Containers		
10% NBF 20 mL jar	384 / case	56201
10% NBF 40 mL jar	216 / case	56401
10% NBF 60 mL jar	144 / case	56601
10% NBF 60 mL jar	150 / case	53601
10% NBF 90 mL jar	125 / case	53901
10% NBF 120 mL jar	75 / case	561201
10% NBF 120 mL jar	100 / case	531201
Shandon Containers		
Formal-Fixx 20 mL jar	180 / case	9990910
Formal-Fixx 60 mL jar	125 / case	9990914
Formal-Fixx 90 mL jar	125 / case	9990916
Formal-Fixx 120 mL jar	125 / case	9990918
Cytospin Collection Fluid 120 mL jar	125 / case	9990323
Glyo-Fixx™ 20 mL jar	180 / case	9990920
Glyo-Fixx 60 mL jar	125 / case	9990924
Glyo-Fixx 120 mL jar	125 / case	9990928
Mucolexx 120 mL jar	50 / case	9990375

Paraffin



Designed to suit all histological applications, including accommodations for rapid infiltration, extra-thin sectioning, and hard/fibrous tissue. Resealable bags are designed to stand-up for easy storage and to reduce the chance of countertop spillage.

Name	Item number	Unit of measure	Description	Melting Point	Infiltration	Embedding
Histoplast	6774006	1 x 2.5 Kg (5.5 lbs)	Non-polymer paraffin for use in infiltration and embedding	55-57 °C (131-135 °F)	x	x
Histoplast	6774060	1 x 10 Kg (22 lbs)				
Histoplast Kit	6774006K	5 x 1 Kg (2.2 lbs)	Used for Excelsior and Revos tissue processors	55-57 °C (131-135 °F)	x	x
Histoplast PE	8330	8 x 1 Kg (2.2 lbs)	Can be used in both infiltration and embedding procedures	56 °C (133 °F)	x	x
Histoplast PE Kit	8330K	5 x 1 Kg (2.2 lbs)	Used for Excelsior and Revos tissue processors	56 °C (133 °F)	x	x
Histoplast IM	8331	8 x 1 Kg (2.2 lbs)	Utilizes DMSO to help infiltrate larger tissues, making ideal for tissues such as whole kidney	56 °C (133 °F)	x	
Histoplast IM Kit*	8331K	5 x 1 Kg (2.2 lbs)	Used for Excelsior and Revos tissue processors	56 °C (133 °F)	x	
Histoplast LP	8332	8 x 1 Kg (2.2 lbs)	Lower melting point to help reduce the chance of distortion on small and friable tissue	50-54 °C (122 - 129 °F)	x	x
Histoplast LP Kit	8332K	5 x 1 Kg (2.2 lbs)	Used for Excelsior and Revos tissue processors	50-54 °C (122 - 129 °F)	x	x
Paraffin Type 1	8334	10 x .9 Kg (2 lbs)	Low polymer wax designed for the infiltration of tissue	55-57 °C (131-135 °F)	x	
Paraffin Type 1 Kit*	8334K	10 x .9 Kg (2 lbs)	Used for Excelsior and Revos tissue processors	55-57 °C (131-135 °F)	x	

*Not available for purchase in EMEA

Name	Item Number	Unit of Measure	Description	Melting Point	Infiltration	Embedding
Paraffin Type 3	8335	10 x .9 Kg (2 lbs)	Low polymer wax designed for the infiltration of tissue	55 - 57 °C (131-135 °F)	x	
Paraffin Type 6	8336	10 x .9 Kg (2 lbs)	Specially formulated wax without polymer but is still stable enough to use in infiltration and embedding	55-57 °C (131-135 °F)	x	x
Paraffin Type 9	8337	10 x .9 Kg (2 lbs)	High polymer. Ideal for sectioning tissues at 2 microns	55-57 °C (131-135 °F)		x
Paraffin Type H	8338	10 x .9 Kg (2 lbs)	Ideally suited for both infiltration and embedding	55-57 °C (131-135 °F)	x	x
Paraffin Type L	8339	10 x .9 Kg (2 lbs)	Low polymer paraffin for use with small tissue	55-57 °C (131-135 °F)	x	x
Precision Cut	B1002490	10 x 1 Kg (2.2 lbs)	Good for both infiltration and embedding	56 °C (133 °F)	x	x
Precision Cut Kit	B1002490K	5 x 1 Kg (2.2 lbs)	Used for Excelsior and Revos tissue processors	56 °C (133 °F)	x	x

Parapel™ Paraffin Repellent

Protect against excess buildup of wax on countertops and instrumentation.

11 oz (325 mL) | 12 / case

Description	Quantity	Order Number
Parapel paraffin repellent 50 mL	ea.	2300

5 Liter Reagents – Syntri Safeguard

The accuracy of patient tests often hinges upon proper preparation and consistency in processes throughout the laboratory. When paired with Syntri Service and reagents featuring Syntri Safeguard RFID technology, the Revos tissue processor tracks and logs reagent usage through the Cloud. It remembers every bottle loaded, protocol executed and service performed – helping to reduce downtime and facilitating efficient use of reagents.



Description	Order Number
Syntri Safeguard 10% Neutral Buffered Formalin, 4 x 5 L	5735SS
Syntri Safeguard Pen-Fix, 4 x 5 L	6115SS
Syntri Safeguard Dehydrant 100%, 4 x 5 L	6215SS
Syntri Safeguard Xylene, 4 x 5 L	6615SS
Syntri Safeguard Clear-Rite 3, 4 x 5 L	6915SS
Syntri Safeguard Flex 100, 4 x 5 L	8115SS
Syntri Safeguard Isopropyl Alcohol, 4 x 5 L	9617SS
Syntri Safeguard Formal-Fixx, 4 x 5 L	6764215SS
Shandon Syntri Safeguard Xylene Substitute, 4 x 5 L	6764515SS

Syntri Safeguard Pairs With Revos Tissue Processor

When used in conjunction with Syntri Safeguard consumables, the Revos tissue processor has the power to track every last drop of reagent used in the system. Syntri Safeguard technology enables the instrument to sense where the 100% processing alcohol is loaded in the system and prevents incorrect replenishment.

Find out more about the revolutionary Revos tissue processor on [page 26](#).



Epredia Fixation Products



Neutral Buffered Formalin 10%

- Richard-Allan Scientific Neutral Buffered Formalin (NBF) 10% is a premixed AFIP formulated product that reduces exposure to toxic fumes
- Phosphate buffers are used to stabilize the pH between 6.8 and 7.2
- Stringent quality control ensures a formalin concentration of 10%
- Stable to freezing temperatures
- Concentrate reduces storage space
- One gallon of concentrate to four gallons of distilled or deionized water ensures consistent results with those of the premixed 10% NBF

Description	Size	Qty.	Order Number
Concentrated			
Bottle	1 gal (3.8 L)	4 / case	5700
Pre-Mixed, Ready to Use			
Bottle	1 gal (3.8 L)	4 / case	5701
Bottle	1.32 gal (5 L)	4 / case	5735
Cubitainer	5 gal (5 L)	ea.	5705
Cubitainer	2.5 gal (9.48 L)	ea.	5725
Drum	9.5 gal (208 L)	ea.	5755

Formaldehyde 37%

- Richard-Allan Scientific Formaldehyde 37% is for use in histological applications to fix and store tissue specimens
- Easy-to-pour container minimizes splashing and reduces spills
- Unbuffered

Description	Size	Qty.	Order Number
Bottle	1 gal (3.8 L)	4 / case	9311

Zinc Formalin 10%

- Richard-Allan Scientific Buffered Zinc Formalin is for use in immunohistochemistry techniques to enhance nuclear detail
- Easy-to-pour bottle helps reduce spills

Description	Size	Qty.	Order Number
Bottle	1 gal (3.8 L)	4 / case	5701ZF
Cubitainer	5 gal (18.9 L)	ea.	5705ZF

Zinc Formalin, Unbuffered 10%

- Richard-Allan Scientific Unbuffered Zinc Formalin can be used as an alternative for 10% formalin
- Easy-to-pour bottle helps reduce spills and splashing
- Does not contain mercury

Description	Size	Qty.	Order Number
Bottle	1 gal (3.8 L)	4 / case	7600

Signature Series Pen-Fix

- Richard-Allan Scientific™ Signature Series™ Pen-Fix™ is a uniquely buffered alcoholic formalin fixative
- Excellent frozen section fixative
- Performs well with fatty or thick tissue sections
- Fixation and dehydration occur simultaneously and the penetration rate is three times faster than that of 10% neutral buffered formalin
- Can be used in all open or enclosed tissue processors and in the grossing room
- Recommended for use in the second and/or third stations of the processor as a secondary fixative

Description	Size	Qty.	Order Number
Bottle	1 gal (3.8 L)	4 / case	6101
Bottle	1.3 gal (5 L)	4 / case	6115
Cubitainer	5 gal (18.9 L)	ea.	6105

Richard-Allan Scientific Carson's Modified Buffered Formalin

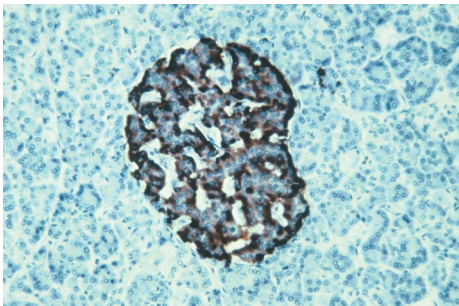
- Richard-Allan Scientific Carson's Modified Buffered Formalin is an excellent general-use fixative
- Performs similarly to 10% neutral buffered formalin
- Use for electron microscopy specimens

Description	Size	Qty.	Order Number
Cubitainer	5 gal (18.9 L)	ea.	57141

Bouin's Fluid

- Richard-Allan Scientific Bouin's Fluid is a saturated, aqueous picric acid solution
- Excellent for use in Trichrome staining procedures
- Use to preserve structures with soft and delicate textures and for gastrointestinal tract specimens

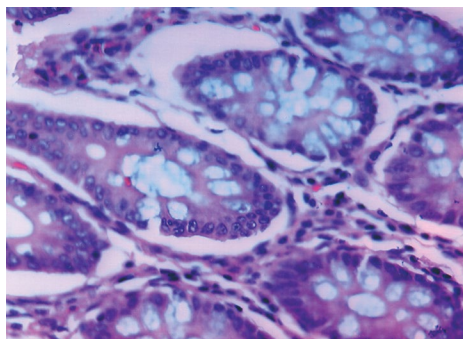
Description	Size	Qty.	Order Number
Bottle	1 gal (3.8 L)	ea.	57211



Shandon Glyo-Fixx

- Shandon™ Glyo-Fixx™ is a non-carcinogenic, non-sensitizing, and environmentally friendly substitute for formalin. The active ingredient, glyoxal, is a di-aldehyde, which has almost no vapor and is used with the same protocols as formalin
- Glyo-Fixx allows higher antibody dilutions and works well with conventional special stains including silver procedures, Schmorl's for reducing substances, PAS, Alcian blue, Mucicarmine, Verheoff-Van Gieson for elastin, and Trichrome
- Offers results superior to neutral buffered formalin - produces distinct, crisp cellular morphology
- No unpleasant smell or cross linking as with formaldehyde - fixes most antigens without impairing immuno-reactivity
- Allows special stain dyes to be sharp without background staining
- Presents fine detail in specimen structure

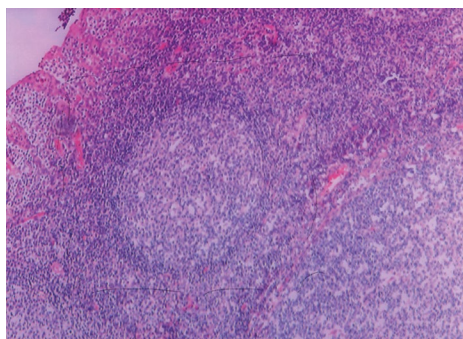
Description	Size	Qty.	Order Number
Concentrated			
Container	3.8 L	ea.	6764265
Pre-Mixed, Ready to Use			
Bottle	1 gal (3.8 L)	ea.	6764262
Cubitainer	19 L	ea.	6764260
Pre-filled containers			
20 mL containers	filled to 10 mL	180 / case	9990920
60 mL containers	filled to 30 mL	125 / case	9990924
90 mL containers	filled to 45 mL	125 / case	9990926
120 mL containers	filled to 60 mL	125 / case	9990928



Shandon Formal-Fix

- Shandon Formal-Fix produces consistent results and extends the life of the rotary valve in tissue processors
- Phosphate-free, 10% neutral buffered formalin
- Stores all specimens without excessive shrinking or hardening
- Use for storage of all tissue – eliminates presorting of EM specimens
- Available pre-filled, ready-to-use, or in economical concentrate - just add water or alcohol
- Concentrate is not affected by freezing, reduces shelf space and is less expensive to ship
- Pre-filled, leak-resistant containers are packed in sturdy trays for courier transport

Description	Size	Qty.	Order Number
Concentrated			
Container	3.8 L (makes 19 L)	ea.	6764254
Container	1 L (makes 5 L)	2 / case	9990244
Pre-Mixed, Ready to Use			
Cubitainer	19 L	ea.	6764240
Cubitainer	10 L	2 / case	9990234
Pre-filled containers			
20 mL containers	filled to 10 mL	180 / case	9990910
60 mL containers	filled to 30 mL	125 / case	9990914
90 mL containers	filled to 45 mL	125 / case	9990916
120 mL containers	filled to 60 mL	125 / case	9990918



Shandon Zinc Formal-Fix

Shandon™ Zinc Formal-Fix™ is a fixative of choice to enhance H&E's and special stains.

- Excellent for immunochemistry
- Minimizes the need for enzyme digestion
- Reduces protein cross-linking, producing well-defined nuclear detail

Description	Size	Qty.	Order Number
Concentrated			
Container	3.8 L (makes 19 L)	ea.	6764255
Container	1 L (makes 5 L)	2 / case	9990245
Pre-Mixed, Ready to Use			
Cubitainer	19 L	ea.	6764240

Shandon Rapid-Fixx Formalin

- Used in Rapid-Chrome Frozen Section Stain Kit (9990001) for fixing slides from frozen sections.

Description	Size	Qty.	Order Number
Bottle	0.26 gal (1 L)	4 / case	6764212

Vytac

- Richard-Allan Scientific™ Vytac™ Formalin Disposal System is a simple, safe and economical disposal system for 10% buffered or unbuffered formalin, including zinc formalin
- Eliminates the need for expensive waste hauling and on-site permits
- Solution breaks down formalin into inert components and, when used as directed, neutralizes more than 99% of the waste formalin collected
- If local regulations allow for drain disposal, pH adjustment will be required
- One part Vytac solution neutralizes four parts formalin waste
- Vytac GNF will neutralize glutaraldehyde

Starter Kit includes: Vytac 1 gal / (3.8 L), reservoir with lid, measuring cup and plastic stir rod.

Description	Size	Qty.	Order Number
Starter kit	---	ea.	5402
Vytac GNF	1 gal (3.8 L)	ea.	5408
Vytac ACX	0.26 gal (1 L)	ea.	5409
Vytac	1 gal (3.8 L)	4 / case	5401
Vytac	5 gal (18.9 L)	ea.	5405

Cal-Rite

- Richard-Allan Scientific™ Cal-Rite™ is a mixture of formic acid and formaldehyde which allows simultaneous decalcification and fixation.
- Reduces poor hematoxylin and eosin staining caused by over-decalcification and/or exposure to harsh mineral acids
- Even after prolonged exposure of specimens in Cal-Rite, nuclear chromatin staining is well preserved and not distorted

Description	Size	Qty.	Order Number
Bottle	1 gal (3.8 L)	ea.	5501
Bottle	2.5 gal (9.5 L)	ea.	5525

Decalcifying Solution

- Decalcifying Solution is formulated to remove calcium from histological specimens. EDTA and dilute hydrochloric acid in this solution require no heat, electricity, or other aids to decalcify bone tissue
- Offers rapid decalcification without destroying nuclear properties of the tissue

Description	Size	Qty.	Order Number
Bottle	32 oz (0.94 L)	6 / case	8340
Cubitainer	1 gal	4 / case	8340-1



Shandon TBD-1 Decalcifier

- Shandon™ TBD-1™ Decalcifier is a rapid hydrochloric decalcifier for processing bone marrow biopsies in as little as 15 to 30 minutes
- Thin pieces of bone process in 3 to 12 hours
- Added ingredients protect cells from actions of acids

Description	Size	Qty.	Order Number
Bottle	0.26 gal (1 L)	2 / case	6764001
Bottle	0.26 gal (1 L)	4 / case	6764002



Shandon TBD-2 Decalcifier

- Shandon TBD-2™ Decalcifier is a formic acid decalcifier for gentler, longer-term processing
- Added ingredients protect cells from actions of acids

Description	Size	Qty.	Order Number
Bottle	0.26 gal (1 L)	2 / case	6764003
Bottle	0.26 gal (1 L)	4 / case	6764004

Richard-Allan Scientific Dehydrants



Richard-Allan Scientific Signature Series Flex 100, 95, 80

- Richard-Allan Scientific™ Signature Series™ Flex™, 100, 95 and 80 provides gentle dehydration while demonstrating brilliant cytoplasmic staining
- Formulation of methyl and isopropyl alcohol
- Minimizes over-dehydration in smaller biopsies
- Excellent for lipid extraction, allowing for increased paraffin infiltration
- Excellent dye solvent for special stains

Description	Size	Qty.	Order Number
Flex 100			
Bottle	1 gal (3.8 L)	4 / case	8101
Bottle	1.3 gal (5 L)	4 / case	8115
Metal pail	5 gal (18.9 L)	ea.	8105
Drum	55 gal	ea.	8155
Flex 95			
Bottle	1 gal (3.8 L)	4 / case	8201
Bottle	1.3 gal (5 L)	4 / case	8215
Metal pail	5 gal (18.9 L)	ea.	8205
Flex 80			
Bottle	1 gal (3.8 L)	4 / case	8301R



Richard-Allan Scientific Dehydrant 100%, 95%, 80%, 70%

Richard-Allan Scientific Dehydrant 100%, 95%, 80% and 70% is a denatured ethyl alcohol reagent specifically designed for processing and staining of histological and cytological specimens.

- Blend of ethyl, methyl and isopropyl alcohols
- Can be used as a dye or stain solvent

Description	Size	Qty.	Order Number
100%	1 gal (3.8 L)	4 / case	6201
100%	1.3 gal (5 L)	4 / case	6215
100%	55 gal (208 L)	ea.	6255
95%	1 gal (3.8 L)	4 / case	6301
95%	1.3 gal (5 L)	4 / case	6315
95%	55 gal (208 L)	ea.	6355

Description	Size	Qty.	Order Number
80%	1 gal (3.8 L)	4 / case	6401
80%	1.3 gal (5 L)	4 / case	6415
70%	1 gal (3.8 L)	4 / case	6501
70%	1.3 gal (5 L)	4 / case	6515
60%	1.3 gal (5 L)	4 / case	7515



Richard-Allan Scientific Signature Series Clear-Rite 3

- Richard-Allan Scientific™ Signature Series™ Clear-Rite 3™ is a unique blend of isoparaffinic aliphatic hydrocarbons for tissue processing and staining
- Excellent lipid extraction during tissue processing
- Renders deparaffinization and clearing during the staining process
- Does not produce hard or brittle specimens, even after prolonged exposure
- Use in all tissue processors and automatic stainers
- Benzene-free
- Very low odor

Description	Size	Qty.	Order Number
Bottle	1 gal (3.8 L)	4 / case	6901
Bottle	1.32 gal (5 L)	4 / case	6915

Shandon Xylene Substitute

- Shandon Xylene Substitute is a safer, more convenient alternative to xylene for processing, staining and coverslipping
- Airborne exposure limit three times safer than xylene (TLV 300ppm)
- Virtually odorless aliphatic hydrocarbon – no citrus aroma
- Not sensitizing to normal skin
- Evaporation rate similar to xylene – slides dry quickly
- Grease-less
- Can be recycled with solvent recyclers

Description	Size	Qty.	Order Number
Bottle	1.06 gal (4 L)	ea.	9990505
Bottle	1.06 gal (4 L)	4 / case	6764506
Bottle	1.3 gal (5 L)	4 / case	6764515
Metal pail	5 gal (18.9 L)	ea.	9990507
Drum	55 gal (208 L)	ea.	9990509

Citrus Clearing Solvent

- Citrus Clearing Solvent is a clearing solvent that is a highly effective xylene substitute
- Use as a direct replacement for xylene in both manual or automated system applications
- D-limonene-based solvent has a slight citrus scent
- Higher flash point eliminates the need for storage in a flammable safety cabinet

Description	Size	Qty.	Order Number
Bottle	1 gal (3.8 L)	4 / case	8301

Richard-Allan Scientific Xylene

- Richard-Allan Scientific Xylene is used for all tissue processors and automatic stainers
- Strict quality assurance, including gas chromatography, is performed on each lot to guarantee a consistent product
- Offers superior lipid extraction, optimal paraffin infiltration and excellent deparaffinization and clearing during staining
- Contains the lowest level of benzene, a known carcinogen

Description	Size	Qty.	Order Number
Bottle	1 gal (3.8 L)	4 / case	6601
Bottle	1.32 gal (5 L)	4 / case	6615

Richard-Allan Scientific Toluene

- Packaged in high-density polyethylene
- Easy-to-pour container can reduce spills when pouring

Description	Size	Qty.	Order Number
Bottle	1 gal (3.8 L)	4 / case	9711
Metal pail	5 gal (18.9 L)	ea.	9715

Histostar Embedding Center



The Histostar™ Embedding Center is designed to enhance user comfort and increase work productivity, allowing for a seamless transition from tissue processing to microtomy.

Cool and Contoured

- All user contact points are smooth and insulated providing a cool and comfortable workspace. The casework has been precision sculpted to avoid pressure points and uncomfortable heated areas
- Cool LED lighting provides specimen illumination at five user-selectable intensities, without the clutter of awkward remote lighting. A low-profile dispense head further enhances specimen visibility

High capacity Throughput

- With its large-capacity tissue storage tank, the HistoStar is capable of accepting baskets from any tissue processor. The five-liter paraffin reservoir is one of the largest basket storage compartments, and along with the large area cold plate, has been designed for maximum productivity in the busiest of laboratories
- Any sample size can be handled with ease. A simple adjustment moves the dispensing paddle to accommodate the samples you are working with. Even Super Mega™ cassettes from EpreDia can be embedded. Two different nozzle lengths allow for adaptation to personal convenience
- Large easy to read touch screen display allows quick access to the precise temperature controls and other parameters. Programmable “sleep” mode saves energy and accommodates user workflow
- Integrated ParaTrimmer™ – excess paraffin can be removed during the embedding process without scraping
- Adjustable cold plate with variable temperature +/- 5 °C. Holds up to 72 blocks at a time

Physical Specifications

Dimensions:

Embedding module (D x W x H):
23 x 25.5 x 17 in.
(58.7 x 65 x 43 cm)

Cold module (D x W x H):
23 x 17 x 14.5 in.
(58.5 x 43 x 36.5 cm)

Weight:

Embedding module: 55.12 lbs / 25 kg

Cold module: 44.10 lbs / 20 kg

Wax reservoir capacity: 5 L

Temperatures

Wax reservoir: 50-70 °C

Cold spot: 5 °C

Hot spot: 50-70 °C

Tissue storage: 50-70 °C

Mold storage: 50-70 °C

Cold plate: Adjustable, -12 to -5 °C

Description	Order Number
HistoStar Instrument (Complete)	
100-120 V, 50/60 Hz	A8100002
220-140 V, 50/60 Hz	A8100001
Embedding Module	
100-240 V, 50/60 Hz	A8100007
HistoStar Cold Module	
100-120 V, 50/60 Hz	A8100005
220-240 V, 50/60 Hz	A8100004

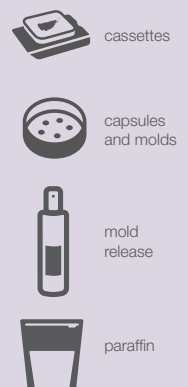
Accessories	Order Number
Tamping tools kit, 2 / pk (1 x 20 mm; 1 x 12 mm)	A81010030
Spatula kit, 2 / pk	A81010031
Cassette lid storage cover	A81010026
Magnifier assembly	A81010032
Foot switch	AP16629
Heated forceps, red, 1 mm tip	A81010033
Heated forceps, yellow, 2 mm tip	A81010034
Heated forceps, blue, 4 mm tip	A81010035
Document holder kit	A81010036



Paraffin

Enhance the use of your Histostar embedding center with a wide variety of Epredia paraffin. With dozens of varieties, find the best paraffin for your tissue type to produce the highest quality sections.

You'll need:



Cassettes

The entire range of cassettes has been redesigned for better performance – both in printing and in laboratory processes.

- The all-new surface finish and reinforced print faces are built to optimize print quality when used with PrintMate AS cassette printers
- All-new PrintMate AS-compatible tubes are precisely engineered to reduce jamming and prevent downtime
- Opening and closing forces have been carefully adjusted for ease of use, while safeguarding valuable specimens during processing
- All cassette designs have been comprehensively validated for print quality, processing quality, and reliability in embedding and sectioning
- New 12-color range selected for scanning reliability



PrintMate Embedding Cassette

- Pore style: Round holes
- For routine specimens
- Lid hinge: Reversible



PrintMate Slotted Cassette

- Pore style: Slotted
- For routine specimens
- Lid hinge: Reversible



Thinline Slotted Cassette

- Pore style: Slotted
- For routine specimens
- Lid hinge: Front edge



Slotted Cassette 2

- Pore style: Slotted
- For routine specimens
- Lid hinge: Front edge



TissueLoc™ Cassette (Cassette IV)

- Pore style: Slotted
- For routine specimens
- Lid hinge: Back edge
- Large tab for easy opening



PrintMate Biopsy Cassette

- Pore style: Small squares
- For biopsy specimens
- Lid hinge: Reversible



Thinline Biopsy Cassette

- Pore style: Small square
- For biopsy specimens
- Lid hinge: Front edge



Biopsy Cassette 2

- Pore style: Small square
- For biopsy specimens
- Lid hinge: Front edge



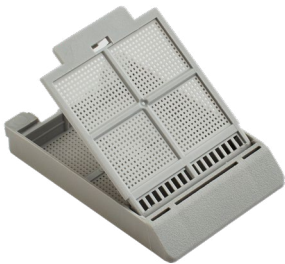
TissueLoc Biopsy Cassette (Cassette IV)

- Pore style: Small square
- For biopsy specimens
- Lid hinge: Back edge
- Large tab for easy opening



HistoScreen™ Cassette

- Pore style: Mesh
- For very small biopsy specimens
- Eliminates need for sponges or bags
- Lid hinge: Back edge



Fine Pore Cassette

- Pore style: Small holes
- For very small biopsy specimens
- Lid hinge: Front edge

Accessories	Order Number
PrintMate Embedding Cassette	
1,000 cassettes, loose, with no lids – for use with metal lids	B851040
750 cassettes, 10 tubes of 75 cassettes, with no lids – for use with metal lids	B851010
1,000 cassettes, loose, with loose-packed lids	B851070
750 cassettes, 10 tubes of 75 cassettes, with loose-packed lids	B851100
Metal lids for cassettes	1001003
PrintMate Slotted Cassette	
1,000 cassettes, loose, with loose-packed lids	B851090
750 cassettes, 10 tubes of 75 cassettes, with loose-packed lids	B851120
Thinline Slotted Cassette	
750 cassettes, 10 tubes of 75 cassettes, with color-matched, attached lids	B851736
Slotted Cassette 2	
1,000 cassettes, loose, with attached lids	B851739
750 cassettes, 10 tubes of 75 cassettes, with loose-packed lids	B851729
TissueLoc Cassette (Cassette IV)	
1,000 cassettes, loose, with attached lids	B851954
750 cassettes, 10 tubes of 75 cassettes, with loose-packed lids	B851720

Accessories	Order Number
PrintMate Biopsy Cassette	
1,000 cassettes, loose, with attached lids	B851080
750 cassettes, 10 tubes of 75 cassettes, with loose-packed lids	B851110
Thinline Biopsy Cassette	
750 cassettes, 10 tubes of 75 cassettes, with color-matched, attached lids	B851737
Biopsy Cassette 2	
1,000 cassettes, loose, with attached lids	B851738
750 cassettes, 10 tubes of 75 cassettes, with loose-packed lids	B851730
TissueLoc Biopsy Cassette (Cassette IV)	
1,000 cassettes, loose, with attached lids	B851925
750 cassettes, 10 tubes of 75 cassettes, with loose-packed lids	B851750
Epredia HistoScreen Cassette	
1,000 cassettes, loose, with attached lids	B851000
750 cassettes, 10 tubes of 75 cassettes, with loose-packed lids	B851001
Epredia Fine Pore Cassette	
1,000 cassettes, loose, with color-matched, attached lids	B851735
750 cassettes, 10 tubes of 75 cassettes, with color-matched, loose-packed lids	B851734

Ordering is easy.

Simply select your cassette and configuration number above, add the two digit color code from below.

Example: Light Green TissueLoc Biopsy Cassette in tubes = B851750LG



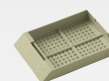
WH
White



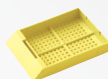
GY
Grey



TN
Tan



BE
Beige



YW
Yellow



GN
Green



LG
Light
Green



LA
Lavender



BL
Blue



LI
Lilac



PK
Pink



OR
Orange

Capsules and Molds



Tissue Processing Capsule

Tissue Processing Capsule is constructed of stainless steel.

- Five sturdy lugs grasp the base securely
- Stainless-steel capsule can be partitioned up to four sections
- Partition separators sold separately

Physical Specifications

Dimensions: (O.D. x D): 1.46 x 0.24 in. (37 x 6 mm)



Standard Cassette

Standard Cassette is constructed of stainless steel.

Physical Specifications

Dimensions: (O.D. x D): 1.58 x 0.276 in. (40 x 7 mm)

Expandable to 0.43 in. (11 mm)



Micro-Cassette

Micro-Cassette is constructed entirely of stainless steel.

- Positive clip-on cover for micro specimen
- Available with fine or coarse mesh

Physical Specifications

Dimensions: (O.D. x D): 0.79 x 0.197 in. (20 x 5 mm)



Large Cassette

Large Cassette is constructed of stainless steel.

- Flexible snap cover is easily attached and removed

Physical Specifications

Dimensions (D x W x L): 0.47 x 0.98 x 1.97 in. (12 x 25 x 50 mm)

Disposable Base Molds and Embedding Rings

Richard-Allan Scientific Disposable Base Molds and Embedding Rings are designed for use with all standard-size cassettes and embedding rings.

- Molded from rigid plastic, the block design provides greater base support and a smaller cutting surface
- Cleaning associated with metal molds is not required
- Transparency facilitates tissue orientation



Disposable Base Molds

Base Molds are made of rigid, transparent plastic. These molds promote rapid paraffin hardening.



Stainless Steel Base Molds

- High-quality, durable molds
- Sizes fit most cassettes
- Superior thermal exchange
- Rounded corners

Super Mega Stainless Steel Base Molds

- High-quality, durable molds
- Fits SuperMega cassettes
- Superior thermal exchange
- Rounded corners



Peel-A-Way™ Disposable Embedding Molds

Made of rigid, transparent plastic, these molds promote rapid paraffin hardening.



Base Mold Release

Release sprays are used to coat base molds for easy separation of paraffin from mold.

- Help reduce paraffin buildup on the molds
- Environmentally safe product is ready-to-use
- Non-aerosol pump spray bottle

4 oz. (118 mL) | 12 / case

Description	Qty.	Order Number
Standard Cassette		
Standard cassette*	ea.	339
Micro-Cassette		
Fine mesh	ea.	33124
Large Cassette		
Large cassette*	ea.	349
Disposable Base Molds and Embedding Rings		
Base mold, 7 x 7 mm	125 / box, 4 box / case	58949
Base mold, 15 x 15 mm	125 / box, 4 box / case	58950
Base mold, 24 x 24 mm	125 / box, 4 box / case	58951
Base mold, 30 x 24 mm	125 / box, 4 box / case	58952
Base mold, 37 x 24 mm	125 / box, 4 box / case	58953
Embedding ring, white*	250 / box, 4 box / case	58993

Description	Qty.	Order Number
Richard Allan Scientific Base Mold Release	12 / case	6600
Parapel paraffin repellent 50 mL	ea.	2300

*Not available for purchase in EMEA

Description	Qty.	Order Number
Disposable Base Molds		
7 x 7 mm molds	125 / box, 4 / case	41740
15 x 15 mm molds	125 / box, 4 / case	41741
24 x 24 mm molds	125 / box, 4 / case	41742
30 x 24 mm molds	125 / box, 4 / case	41743
37 x 24 mm molds	125 / box, 4 / case	41744
Stainless Steel Base Molds		
10 x 10 x 5 mm	10 / pk.	6401015
24 x 24 x 5 mm	10 / pk.	6401017
30 x 24 x 9 mm	10 / pk.	6401017
37 x 27 x 9 mm	10 / pk.	6401018
Peel-A-Way Disposable Embedding Molds		
12 x 12 x 20 mm	288 / case	1220
22 x 22 x 20 mm	288 / case	2219
30 x 22 x 20 mm	288 / case	1830
40 x 22 x 20 mm	288 / case	1841

