



GEMINI AS

Staining
consistently
clear results

Confidence begins with a crisp, well-defined stain

Epredia histology and cytology stains produce consistent, clear results for hospitals, cancer centers and private labs.

High-Performance

- Achieve optimum staining performance
- Nuclear clarity and superb definition
- Wide variety of easy-to-use special stains

Intelligent Workflow Optimization

- Top-of-the-line instruments designed to save on space and offer automatic optimization of staining routines
- Conduct manual staining procedures with our wide selection of staining racks and accessories

The Total Solution

- Reduce spills with easy-to-pour dehydrants
- Ensure high-quality and consistent results with reagent grade cleaning reagents
- Get peace of mind with Epredia extended service contracts that include preventative maintenance and thorough, expedited repairs, ensuring minimal downtime in your laboratory



Gemini AS Slide Stainer



Physical Specifications

Dimensions (D x W x H):
31 x 28.5 x 35 in.
(79 x 72 x 88.8 cm)

Weight: 192 lbs / 87 kg

Power requirements:
300 VA at 100-240 VAC, 50/60 Hz

Includes:

Unheated stainer; 35 stain pots (320 mL fill volume) supplied, fitted. Heated stainer; 30 stain pots (320 mL fill volume) and five heater pots supplied, fitted. Both models contain charcoal filter, staining baskets/carriers (5/pk x 2), three-well water station (two fitted), single pot covers (6/pk.), multi-pot covers (4/pk.), 2.5 m water inlet hose, spare staining pots (3/pk.), operator guide, operator guide CD, laminated quick reference cards and service record book

Versatility in action

- 26 reagent stations – enough to run several protocols. Fully editable, user defined protocols allow the user to perform multiple actions at once, saving time
- Urgent start gives user the opportunity to prioritize “urgent” baskets without compromising those already in process
- Open system uses EpreDia stains and reagents
- Compatible with EpreDia range of coverslippers and Slide Basket Transfer System to reduce time in the lab
- Five optional on-board heaters cater to slide drying in high-volume situations

Auto-Optimization

- Easy-to-use software schedules runs, allocates reagents, optimizes reagent layout, and calculates the most efficient route for each protocol to maximize throughput and minimize reagent carryover
- Step-start capability allows protocols to be started from any step
- Quality control system can be set to monitor reagent usage and batch throughput
- PIN protection system secures operator’s customized protocols and settings

Space-Saving Design

- Unique, small footprint allows Gemini AS stainer to fit into any laboratory space
- Reagent stations are easy to access with a turntable on the lower level

Description	Order Number
Gemini AS with 5 heater stations	A81500001
Gemini AS unheated	A81500002

Accessories	Order Number
Charcoal filter	9990610
Static water wash station	A78010226
Vent adapter kit	A78010467
Water wash pot, 3 well	A78010201
Water wash inlet hose	AP14160
1 GB USB stick	AP17385
Reagent pot (3 / pk.)	A78010487
Reagent pot cover, multi-pot (4 / pk.)	A78010488
Reagent pot cover, single pot (6 / pk.)	A78010489
Basket/carrier (5 / pk.) (each holds 20 slides)	A78010466
Gemini baskets (ClearVue compatible), black slider (5 / pk.)	A79210064
Gemini baskets (ClearVue compatible), white slider (5 / pk.)	A79210065
Carrier for Sakura™ racks (5 / pk.)	A78010404
Pot insert for manual coverslipping (3 / pk.)	A78010505
Basket adapter for large slides up to 3 x 2.3 in. (45 x 58 mm) (5 / pk.)	



Did you know that EpreDia offers a combined staining and coverslipping solution?

Checkout the [Slide Basket Transfer System](#), compatible with the ClearVue coverslipper and Gemini AS slide stainer

You'll need:



staining assemblies



staining accessories



staining jars



staining reagents



Manual Staining Station

The Manual Staining Station is ideal for unique staining needs, frozen sections, or special stains.

- Uses the same staining troughs and slide baskets as the Gemini AS slide stainer
- Best when used for low-volume procedures
- Sturdy cover closes over troughs to minimize evaporation
- Baskets are designed to lock slides into position even when turned upside down
- Slide baskets hold 20 standard microscope slides
- Troughs hold 11 fl oz (320 mL) of reagent

Physical Specifications

Dimensions:

(D x W x H): 7.1 x 39.4 x 4.7 in.
(18 x 100 x 12 cm)

Includes:

Kit includes a steel support rack, a complete set of fourteen staining troughs (No. A78010487) and five slide baskets with carriers (No. A78010466) ; 5/pk)

Description	Order Number
Manual Staining Station	A78500001

Accessories	Order Number
Staining troughs (3 / pk.)	A78010487
Reagent trough cover, (6 / pk.)	A78010489

You'll need:



staining assemblies



staining accessories



staining jars



staining reagents



Linistat Linear Stainer

Streamline your laboratory's workflow during frozen sectioning with the Linistat linear stainer, a compact and efficient staining device that is ideally suited to H&E frozen sections.

- Designed to fit on top of most cryostats
- Fourteen staining stations (twenty seconds each)
- Running water and a thirteen-slide capacity collection tank
- Staining time is under five minutes
- For situations that require hand staining, technicians may dip through the stations, eliminating the need to set up separate staining dishes
- Color-coded slide clips correspond to the colored slides and colored frozen section embedding media, Cryochrome™

Physical Specifications

Dimensions (D x W x H):
7.5 x 25 x 7.5 in.
(19 x 64 x 19 cm)

Clearance height: 10.25 in.

Weight: 16.3 lbs (7.3 kg)

Power requirements:
115 Vac, 60 Hz, 1.0A
230 Vac, 50 Hz, 0.5A

Includes:

Single station staining dishes,
double station staining dishes,
slide clips and rinse water
tubing kit.†

† Contents, packaging and quantities
of inclusions are subject to change
without prior notice.

Description	Order Number
Linistat; 110 - 120 V; 60 Hz	B1000200
Linistat; 220 - 240 V; 50 Hz	B1000201

Accessories	Order Number
Double station staining dishes (5 / pk.)	6754004
Single station staining dishes (10 / pk.)	6754003
Slide clips, pink (25 / pk.)	6754005
Slide clips, blue (25 / pk.)	6754006
Slide clips, yellow (25 / pk.)	6754007
Slide clips, green (25 / pk.)	6754008
Anti-evaporation lid (single station)	231644
Anti-evaporation lid (double station)	231645
Anti-evaporation lid (triple station)	231646
Stainless steel holding tank	A79830072
Stainless steel evaporation; 18 in. (46 cm)	A79830022

You'll need:





Slide Basket Transfer System

The Slide Basket Transfer System (SBTS) eliminates the need to manually transfer slide baskets from the Gemini AS slide stainer to the ClearVue coverslipper.

- Free up your team's time with automatic transfer from the Gemini AS slide stainer to the ClearVue coverslipper
- Simply place slides in the Gemini AS slide stainer and carry on with other tasks without distraction
- The system will alert you when the slides have finished coverslipping in the ClearVue coverslipper
- With a small footprint, the combined system of the Gemini AS slide stainer, Slide Basket Transfer System, and ClearVue coverslipper seamlessly fits into virtually any laboratory workflow
- Compatible with the Gemini AS and ClearVue systems made after February 2018 only

Description	Order Number
Slide Basket Transfer System	A84500001

Accessories	Order Number
SBTS baskets (5) black	A84510032
SBTS baskets (5) white	A84510041
Operator guide	A84510100
Documentation CD	A84510100-CD
Xylene tray	A84530101
Manual unload tool	A84530110
Wash bottle	AP18730

Physical Specifications

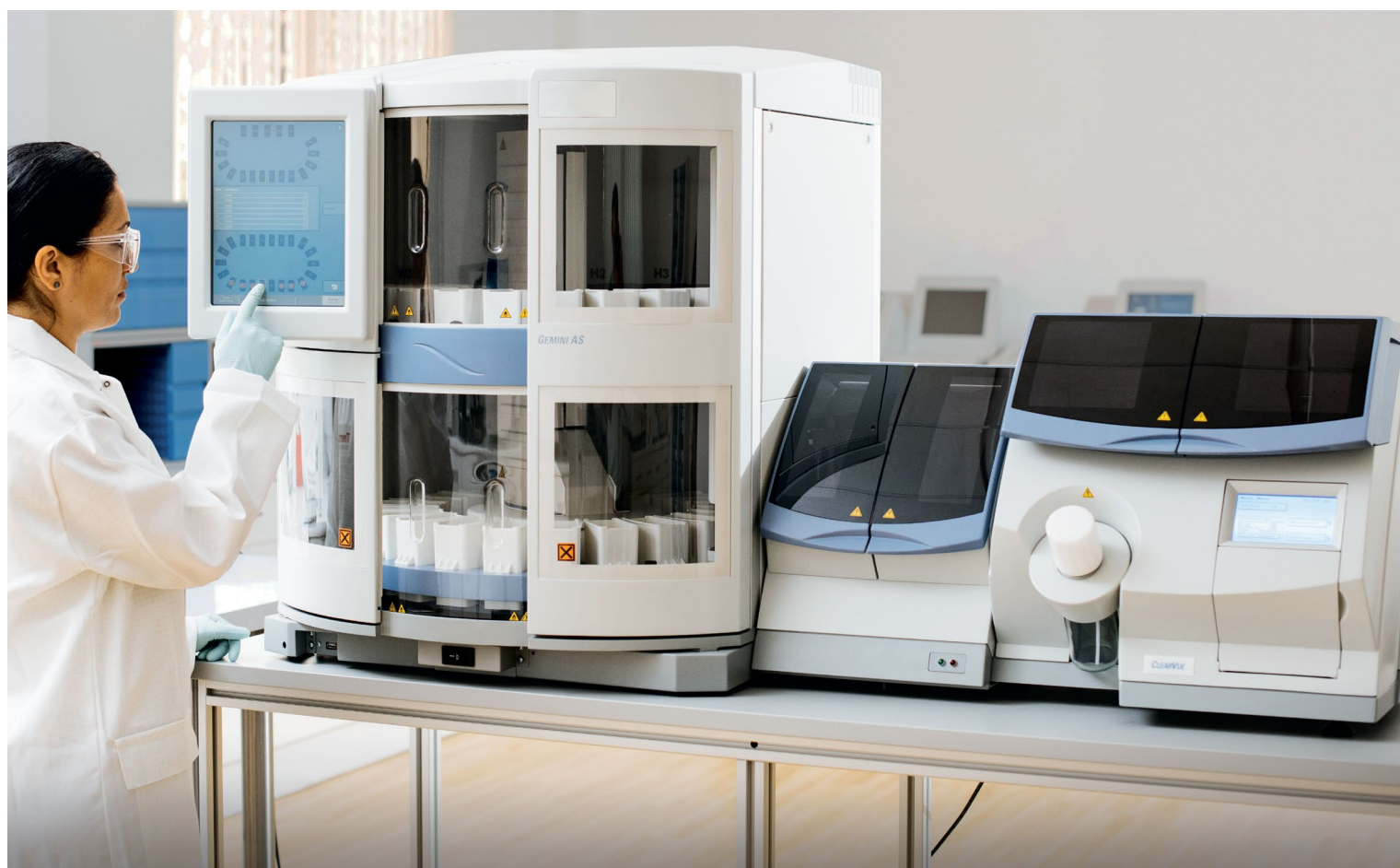
Dimensions (D x W x H):
53 x 35 x 43 cm

Weight:
44 lbs, 20 kg

Power requirements:
100-240 Vac, 50/60 Hz, 600 VA

You'll need:





Complete Staining Assemblies



Complete Staining Assembly 110

- Complete assembly 110 includes rack/handle (No. 113), dish (No. 112) and cover (No. 111)
- Staining rack 113 is made from stainless steel and holds up to 30 slides; maximum slide size is 3 x 2 in. (76 x 51 mm)
- Staining dish 112 is made from stainless steel with inside dimensions of 4.3 x 3.35 x 2.95 in. (110 x 85 x 75 mm)
- Staining dish holds up to 350 mL of solution with a fully loaded staining rack
- Staining dish cover 111 is made from stainless steel



Complete Staining Assembly 121

- Complete assembly 121 includes rack/handle (No. 113), dish (No. 122) and cover (No. 123)
- Staining rack 113 is made from stainless steel and holds up to 30 slides; maximum slide size is 3 x 2 in. (76 x 51 mm)
- Staining dish 122 is made from non-autoclavable glass with inside dimensions of 4.3 x 3.6 x 2.6 in. (110 x 92 x 67 mm)
- Staining dish holds up to 350 mL of solution with a fully loaded staining rack
- Staining dish cover 123 is made from stainless steel



Complete Staining Assembly 130

- Complete assembly 130 includes rack/handle (No. 120), dish (No. 131) and cover (No. 132)
- Staining rack 120 is made from stainless steel and holds up to 60 slides; maximum slide size is 3 x 2 in. (76 x 51 mm)
- Staining dish 131 is made from non-autoclavable glass with inside dimensions of 7.95 x 4.4 x 2.8 in. (202 x 112 x 72 mm)
- Staining dish holds up to 750 mL of solution with a fully loaded staining rack
- Staining dish cover 132 is made from stainless steel

Description	Order Number
Complete Assembly 110	110
Staining rack	113
Staining dish	112
Staining dish cover	111
Complete Assembly 121	121
Staining rack	113
Staining dish	122
Staining dish cover	123
Complete Assembly 130	130
Staining rack	120
Staining dish	131
Staining dish cover	132

Epredia Staining Accessories



Vertical Staining Rack

- Constructed of welded stainless steel for durability
- Holds 38 (76 x 26 mm) slides vertically
- Slides fit into individual slots to allow for free exchange and rapid drainage of staining reagents
- Measures 2.5 x 2.35 x 4.1 in. (64 x 60 x 105 mm)



Shandon Slide Holder

- Features individually stamped slots
- Holds ten (76 x 26 mm) slides vertically
- Can be used with the frozen staining kit glass beakers
- Not for use with Coplin jars or Shandon vertical staining jar (No. 140)



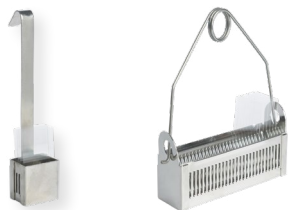
Plastic Slide Grip

- Plastic slide grip is constructed of molded plastic that withstands chemicals used in staining, including special stains
- Hold five (76 x 26 mm) slides
- Can be used in temperatures to 80 °C
- Fits Coplin jars and round-mouthed staining jars



Angus-Ranieri™ Slide Rack

- Holds up to forty 76 x 26 mm slides



Coverglass Staining Racks

- Welded stainless steel racks securely hold 22 mm or 24 mm coverslips
- Available in two sizes
- Five-coverslip rack will fit in vertical staining jar 140 or glass beaker 146
- Thirty-coverslip rack includes a spring-type detachable handle and measures 4.0 x 1.1 x 1.2 in. (102 x 28 x 31 mm)



Polyacetal Trough/Dish

- Polyacetal trough/dish features a molded black polyacetal trough with close-fitting lid
- Can be used with alcohol and xylene, but not phenol
- Capacity: 170 mL



Graduated Stainless Steel Beakers

- Graduated stainless steel beakers feature inside graduated markings that show milliliters and fluid ounces
- Constructed of surgical grade stainless steel

Accessories	Order Number
Vertical staining rack	143
Shandon slide holder	147
Plastic slide grip	1975
Angus-Ranieri slide rack	
Coverglass staining rack (30 coverslips)	114
Coverglass staining rack (5 coverslips)	116
Polyacetal Trough/Dish	
Graduated stainless steel beaker (940 mL)	8532
Graduated stainless steel beaker (470 mL)	8516

Staining Jars



Coplin Staining Jar

- A heavy, clear glass jar with internal grooves
- Holds ten slides (76 x 26 mm) back-to-back
- Includes a glass drop-on lid or a plastic screw-on lid



Plastic Coplin Staining Jar

- A microwavable, high-density polyethylene jar with internal grooves
- Holds ten slides back-to-back
- For general purpose use
- 40 mm diameter; circular, tapered top
- Includes domed, screw-on cap

Columbia Jar

- A glass jar to accept 22 x 22 mm coverslips
- Low volume requirement (8 mL) makes this suitable for use with costly reagents
- Supplied with plastic screw-on cap



Spill-Free Jar

- Holds ten slides, one per slot
- 1.4 x 1 in. (36 x 26 mm) rectangular top with straight body
- Polypropylene construction with internal grooves
- Integral snap-lock lid with reagent-proof lid seal
- Microwavable

Description	Qty.	Order Number
Coplin Staining Jar		
Drop-on lid	ea.	E94
Screw-on lid	ea.	107
Plastic Coplin Staining Jar		
Plastic Coplin staining jar	ea.	194
Columbia Jar		
Columbia jar (fits 4 coverslips, 8 back-to-back)	ea.	E93
Plastic Spill-Free Slide Jar		
Plastic spill-free slide jar	ea.	1001362
Plastic spill-free slide jar	12 / pk.	1001363
Plastic spill-free slide jar	48 / case	1001361

Richard–Allan Scientific Signature Stains

Richard-Allan Scientific Hematoxylin 7211

Richard-Allan Scientific Signature Series Hematoxylin 7211 is a uniquely formulated product that yields results which exceed that of Gill or Harris Hematoxylin.

- No affinity for acid mucopolysaccharide (mucin) staining
- Crisp slides with clear, well-defined nuclear chromatin delineation

Richard-Allan Scientific Hematoxylin 7212

Richard-Allan Scientific Signature Series 7212 offers a unique formula consisting of a new generation dye-lake complex.

- Rapid, progressive stain requires no filtration prior to use
- Contains no mercuric oxide
- Little affinity for mucin staining
- Results in clear, crisp nuclear stain with a deeper, more robust intensity

Richard-Allan Scientific Hematoxylin 1

Richard-Allan Scientific Signature Series Hematoxylin 1 produces staining intensities similar to Gill™ 1, 2 and 3 Hematoxylin, based on timing.

- Differentiation is not necessary, however, Clarifier 1 should be used to eliminate any background staining caused by use of excessive water bath adhesive
- Rapid stain requires no filtration prior to use
- Will not form crystals upon standing or exposure to cold weather

Richard-Allan Scientific Hematoxylin 2

Richard-Allan Scientific Signature Series Hematoxylin 2 produces staining intensity similar to Harris Hematoxylin.

- Unlike many comparable products, Hematoxylin 2 does not contain mercuric oxide and will not form a metallic sheen over its surface each day
- Differentiation is not necessary, however, Clarifier 2 should be used to eliminate any background staining caused by the use of excessive water bath adhesive
- Recommended for frozen sections
- Requires no filtration prior to use
- Will not form crystals upon standing or exposure to cold weather

Richard-Allan Scientific Eosin-Y

Richard-Allan Scientific Signature Series Eosin-Y is a fast-acting, alcoholic counterstain that provides excellent delineation of cytoplasmic components.

- Color contrast between the nuclei and cytoplasm is unmatched
- Various shades of red and pink differentiate muscle, red blood cells, and connective tissue
- Strict quality assurance guarantees product consistency and longevity
- Quantitative testing eliminates the need for adjustments in dilution or time

Richard-Allan Scientific Bluing Reagent

Richard-Allan Scientific Signature Series Bluing Reagent is premixed and ready-to-use.

- Buffered to ensure proper alkalinity (pH = 8.0)
- Requires only a one minute rinse in water versus conventional bluing agents which require up to five minutes of rinsing
- Ensures crisp nuclear detail

Richard-Allan Scientific Clarifier 1, 2

Richard-Allan Scientific Signature Series Clarifier 1 and 2 are unique acetic acid formulations designed to remove background stain caused by excessive use of tissue adhesive and to increase cell transparency.

- Both Clarifier 1 and 2 selectively remove hematoxylin staining from excess adhesive without affecting nuclear staining
- Use of Clarifier 1 or 2 improves contrast between nuclei and cytoplasm

Description	Qty.	Order Number	Description	Qty.	Order Number
Richard-Allan Scientific Hematoxylin 7211			Richard-Allan Scientific Bluing Reagent		
1 pt (0.47 L)	4 / case	7211	1 gal (3.8 L)	ea.	7301
1.32 gal (5 L)	ea.	7211L	1 gal (3.8 L)	4 / case	7341
Richard-Allan Scientific Hematoxylin 7212			1.32 gal (5 L)	ea.	7301L
1 pt (0.4 L)	4 / case	7212	Richard Allan Scientific Clarifier 1, 2		
1.32 gal (5 L)	ea.	7212L	Clarifier 1		
Richard-Allan Scientific Hematoxylin 1			1 gal (3.8 L)	ea.	7401
1 pt (0.47 L)	4 / case	7221	1 gal (3.8 L)	4 / case	7441
1.32 gal (5 L)	ea.	7221L	Clarifier 2		
Richard-Allan Scientific Hematoxylin 2			1 gal (3.8 L)	ea.	7402
1 pt (0.47 L)	4 / case	7231	1 gal (3.8 L)	4 / case	7442
Richard-Allan Scientific Eosin-Y			1.32 gal (5 L)	ea.	7402L
1 pt (0.47 L)	4 / case	7111			
1.32 gal (5 L)	ea.	7111L			



Richard–Allan Scientific Standard Stains

Richard-Allan Scientific Gill 1, 2, 3 Hematoxylin

Richard-Allan Scientific™ Gill™ Hematoxylin are progressive nuclear stains. Three strengths are available, allowing the user complete control of staining intensities.

- Gill 1 is recommended for use in cytology
- Gill 2 has applications in histology and cytology
- Gill 3 is used in histology
- All are premixed and ready to use

Richard-Allan Scientific Modified Harris Hematoxylin

Richard-Allan Scientific Modified Harris Hematoxylin is a regressive nuclear stain.

- Formulation contains no mercury and is more stable than conventional Harris Hematoxylin
- Can be used in both histology and cytology
- Should be filtered prior to use

Richard-Allan Scientific Modified Mayer's Hematoxylin

Richard-Allan Scientific Modified Mayer's Hematoxylin is a progressive nuclear stain. It is difficult to over stain sections with this product, yet very crisp nuclear staining is achieved.

- A good choice as a counterstain in immunoperoxidase and special stain procedures
- Requires no acid rinse and does not stain mucin
- Recommended for use when less intense results are desired

Richard-Allan Scientific Differentiating Solution

Richard-Allan Scientific Differentiating Solution is a standard formulation of hydrochloric acid in denatured alcohol.

- Reproducible batch results allow for consistent staining in regressive procedures
- Solution provides clear differentiation and contrast between the hematoxylin and eosin

Richard-Allan Scientific Eosin-Y Alcoholic, Eosin-Y with Phloxine, Eosin-Y Saturated

Richard-Allan Scientific Eosin-Y Alcoholic, Eosin-Y with Phloxine, and Eosin-Y Saturated were developed to satisfy a wide range of customer needs.

- Strict quality control of raw materials and finished product ensures the highest product quality every time
- Eosin-Y Alcoholic produces three distinct color variations enhancing differentiation between muscle, red blood cells and connective tissue
- Eosin-Y with Phloxine yields a brighter reddish hue and a more dramatic differentiation of cytoplasmic color than Eosin-Y Alcoholic
- Eosin-Y Saturated is very intense and rapid counterstain that can be used to make working solutions of Eosin-Y

Powdered Stains

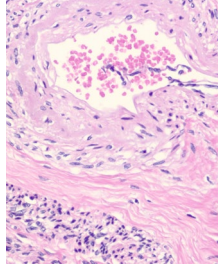
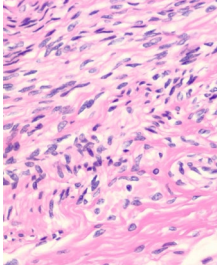
Certified by the Biological Stain Commission

Description	Qty.	Order Number
Richard-Allan Scientific Gill 1, 2, 3 Hematoxylin		
Gill 1 Hematoxylin		
1 pt (0.47 L)	4 / case	72404
1 gal (3.8 L)	ea.	72411
Gill 2 Hematoxylin		
1 pt (0.47 L)	4 / case	72504
1 gal (3.8 L)	ea.	72511
Gill 3 Hematoxylin		
1 pt (0.47 L)	4 / case	72604
1 gal (3.8 L)	ea.	72611
Richard-Allan Scientific Modified Harris Hematoxylin		
1 gal (3.8 L)	ea.	72704
1 gal (3.8 L)	4 / case	72711
Richard-Allan Scientific Modified Mayer's Hematoxylin		
1 pt. (0.47 L)	4 / case	72804
Richard-Allan Scientific Differentiating Solution		
1 pt (0.47 L)	4 / case	74204
1 gal (3.8 L)	ea.	74211
Richard-Allan Scientific Eosin-Y Alcoholic		
1 pt (0.47 L)	4 / case	71204
1 gal (3.8 L)	ea.	71211
2.5 gal (9.46 L) cubitainer	ea.	71225

Description	Qty.	Order Number
Richard-Allan Scientific Eosin-Y with Phloxine		
1 pt (0.47 L)	4 / case	71304
1 gal (3.8 L)	ea.	71311
Richard-Allan Scientific Eosin-Y Saturated		
1 pt (0.47 L)	4 / case	71304
Richard-Allan Scientific Dry Powder Stains		
Eosin-Y 100 g	ea.	90017
Hematoxylin 25 g	ea.	90022



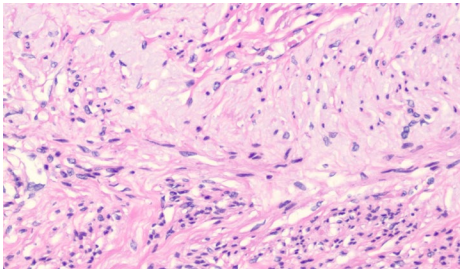
Shandon Staining Reagents



Shandon Harris Hematoxylin

Shandon Harris Hematoxylin has no mucoid staining.

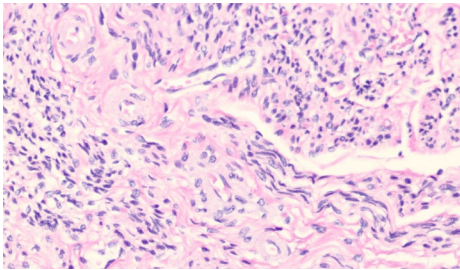
- Available both acidified or non-acidified
- Mercury-free
- Intensely stained, blue black nuclei



Shandon Instant Hematoxylin

Shandon Instant Hematoxylin has no mucoid staining.

- May be used as a substitute for Harris or Gill
- Stains from blue-black to light blue depending upon preparation
- Part A and Part B are reconstituted to make one liter of hematoxylin



Shandon Gill Hematoxylin 1, 2, 3

Shandon™ Gill™ Hematoxylin has mucoid staining.

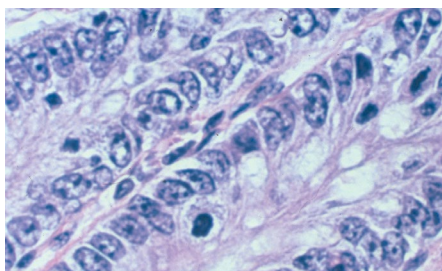
- Gill 1: Light blue nuclei
- Gill 2: Medium blue nuclei
- Gill 3: Blue-black nuclei



Shandon Bluing Reagent

Shandon Bluing Reagent blues hematoxylin stained nuclei.

- Gentle, with no loss or lifting of material from slides (typically associated with ammonia water use)
- Thoroughly pH-controlled for completely effective bluing
- Ready-to-use



Shandon Nu-Clear

Shandon™ Nu-Clear™ reagent is a specially formulated acid alcohol solution. Acid alcohol enhances staining by removing excess Hematoxylin from the slide, resulting in improved cellular clarity. Will also remove the residual Hematoxylin staining the glass.

- Designed to be used with the full line of Epredia automatic stainers as well as manual methods.

Nu-Clear I

- Fast-acting solution
- Recommended for use as a 10-second step in most protocols
- Particularly beneficial for use with Harris Hematoxylin
- May be used on the Epredia Gemini AS Slide Stainer

Nu-Clear II

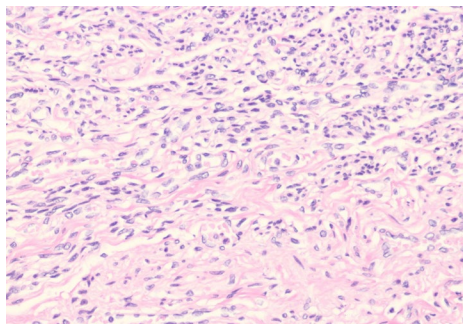
- Less concentrated
- Recommended as a 20-second step
- May be used on the Epredia Linistat stainer and other linear stainers
- Recommended for use with Gill Hematoxylin

Shandon Eosin-Y

Shandon Eosin-Y is a fast-acting cytoplasmic counterstain.

- Produces consistent results
- pH-adjusted for maximum stain uptake
- Produces brilliant staining
- Compatible with all alum Hematoxylin stains
- Available in alcoholic or aqueous formulations
- Ready-to-use





Shandon Instant Eosin

Shandon Instant Eosin Produces consistent results.

- This instant Eosin is stable, precipitate-free and requires no filtering
- pH-adjusted for maximum stain uptake
- Produces brilliant staining
- Compatible with all alum Hematoxylin stains

Description	Qty.	Order Number
Shandon Harris Hematoxylin Non-Acidified		
0.26 gal (1 L)	2 / case	6765001
1.06 gal (4 L)	ea.	6765002
Shandon Harris Hematoxylin Acidified		
0.26 gal (1 L)	2 / case	6765003
1.06 gal (4 L)	ea.	6765004
Shandon Instant Hematoxylin		
Makes 6 L	6 / pack	6765015
Shandon Gill Hematoxylin 1, 2, 3		
Gill 1 Hematoxylin		
0.26 gal (1 L)	2 / case	6765005
1.06 gal (4 L)	ea.	6765006
Gill 2 Hematoxylin		
0.26 gal (1 L)	2 / case	6765007
1.06 gal (4 L)	ea.	6765008
Gill 3 Hematoxylin		
0.26 gal (1 L)	2 / case	6765009
Shandon Bluing Reagent		
0.26 gal (1 L)	2 / case	6769001
1.06 gal (4 L)	ea.	6769002
Shandon Nu-Clear		
Nu Clear I 1.06 gal (4 L)	ea.	6769008
Nu Clear II 1.06 gal (4 L)	ea.	6769009

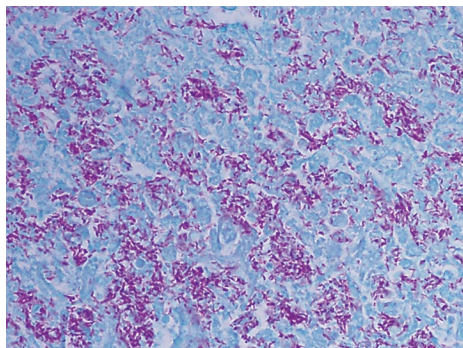
Description	Qty.	Order Number
Shandon Eosin-Y Alcoholic		
0.26 gal (1 L)	2 / case	6766007
1.06 gal (4 L)	ea.	6766008
Shandon Eosin-Y Aqueous		
0.26 gal (1 L)	2 / case	6766009
1.06 gal (4 L)	ea.	6766010
Shandon Instant Eosin Alcoholic		
Makes 6 L	6 / pack	6765040
Shandon Instant Eosin Aqueous		
Makes 6 L	6 / pack	6765540

Richard-Allan Scientific Chromaview Special Stain Kits

Richard-Allan Scientific™ Chromaview™ Special Stains function together as a system to visualize specific cell entities

Bring a systems-approach to special stains offering quality, consistency, ease of use and economy. Available as convenient, ready-to-use kits or as individual components. Each kit is designed to yield ten applications utilizing 50 mL coplin jars.



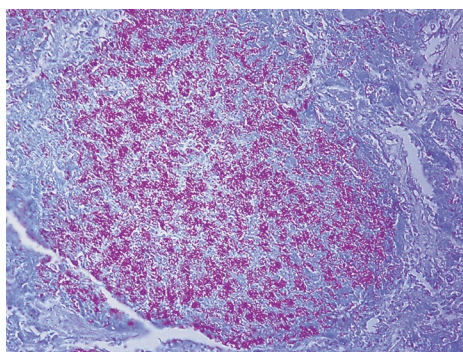


Richard-Allan Scientific Acid-Fast Bacillus Stain (Green Secondary Stains)

Richard-Allan Scientific Acid Fast Bacillus (Green Secondary Stains) is used to identify the presence of acid-fast bacilli in tissue sections and to produce optimal staining while reducing precipitate.

- Acid-fast bacilli are stained bright red against a pale green background

Description	Size	Qty.	Order Number
Acid Fast Bacillus, Green Secondary stain kit	1 kit	ea.	87015
Components			
Carbol Fuschin solution	125 mL	ea.	88001
Fast Green Stain solution	500 mL	ea.	88003
Differentiating solution	500 mL	2 / case	88117

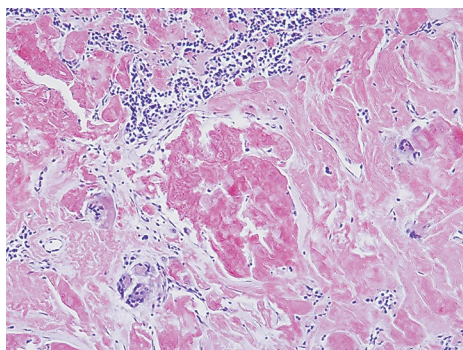


Richard-Allan Scientific Acid-Fast Bacillus Stain (Blue Secondary Stains)

Richard-Allan Scientific Acid Fast Bacillus (Blue Secondary Stains) is used to identify the presence of acid-fast bacilli in tissue sections and to produce optimal staining while reducing precipitate.

- Acid-fast bacilli are stained bright red against a pale blue background

Description	Size	Qty.	Order Number
Acid Fast Bacillus, Blue Secondary stain kit	1 kit	ea.	87016
Components			
Loeffler Methylene Blue stain solution	250 mL	ea.	88002
Carbol Fuschin solution	125 mL	ea.	88001
Differentiating solution	500 mL	2 / case	88117

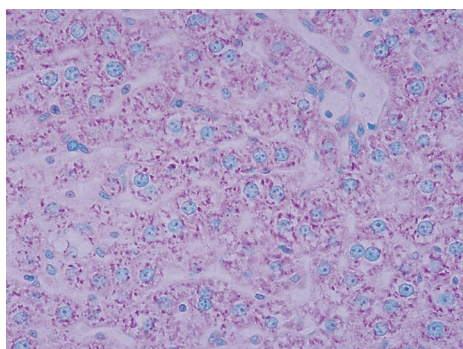


Richard-Allan Scientific Amyloid Stain

Richard-Allan Scientific Amyloid Stain is for the demonstration of amyloid.

- Alkaline Congo Red solution will stain amyloid orange to red and display apple-green birefringence when examined with polarizing microscope

Description	Size	Qty.	Order Number
Amyloid stain kit	1 kit	ea.	87003
Components			
Sodium Hydroxide solution	8 mL	ea.	88004
Congo Red solution	500 mL	ea.	88005
Modifier Mayer's Hematoxylin	500 mL	2 / case	88006

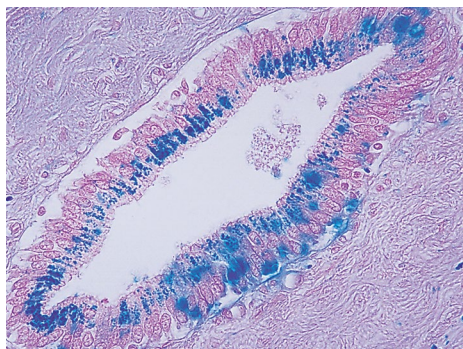


Richard-Allan Scientific Methyl Green-Pyronin Y

Richard-Allan Scientific Methyl Green-Pyronin Y Stain is effective in the identification of plasma cells and RNA in tissue sections and cytological preparations.

- DNA is stained green and RNA is stained red
- Concentrated MGP is diluted prior to use

Description	Size	Qty.	Order Number
Methyl Green-Pyronin Y	125 mL	ea.	87011

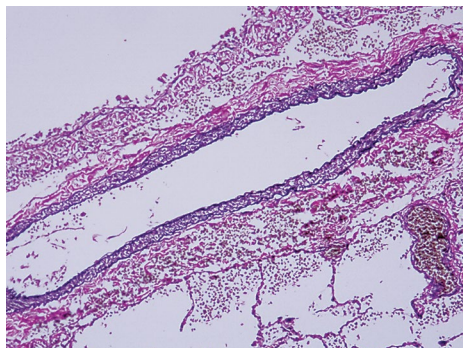


Richard-Allan Scientific Iron Stain

Richard-Allan Scientific Iron Stain is used to detect presence of ferric iron (hemosiderin) in histological or hematological preparations.

- Useful in study of iron deficiency anemia, hemochromatosis and hemosiderosis
- Prussian Blue reaction
- Iron stains blue, nuclei pink-red and cytoplasm pale pink

Description	Size	Qty.	Order Number
Iron stain kit	1 kit	ea.	87006
Components			
Potassium Ferrocyanide solution	250 mL	ea.	88013
Hydrochloric acid solution (20%)	250 mL	ea.	88014
Nuclear Red Thiazin stain solution	125 mL	ea.	88015

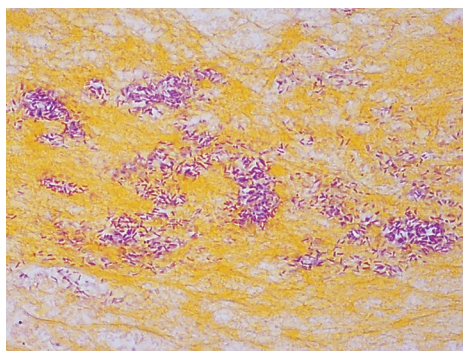


Richard-Allan Scientific Elastic Stain

Richard-Allan Scientific Elastic Stain is based on the Verhoeff Elastic technique.

- Used to demonstrate the atrophy, thinning and loss of elastic tissue
- Also used for identifying the breaks, splitting and reduplication of elastic lamellae that occur in vascular diseases
- Elastic fibers are stained blue-black to black with red collagen and a yellow background

Description	Size	Qty.	Order Number
Elastic stain kit	1 kit	ea.	87017
Components			
Alcoholic Hematoxylin solution	250 mL	ea.	88007
Ferric Chloride solution	125 mL	ea.	88008
Weigert's Iodine solution	125 mL	ea.	88009
Sodium Thiosulfate solution	500 mL	ea.	88000
Van Gieson stain solution	250 mL	ea.	88011

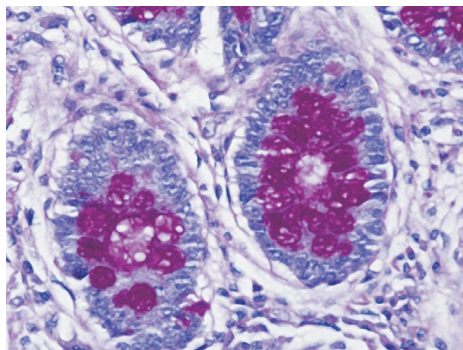


Richard-Allan Scientific Gram Stain (Tissue)

Richard-Allan Scientific Gram Stain (Tissue) identifies Gram-positive and Gram-negative bacteria in tissue sections.

- Gram-positive organisms stain blue to blue-black
- Gram-negative organisms stain red
- Tartrazine provides a yellow background stain

Description	Size	Qty.	Order Number
Gram stain kit	1 kit	ea.	87018
Components			
Crystal Violet solution	500 mL	ea.	88101
Safranin O stain solution	500 mL	ea.	88103
Gram's Iodine	500 mL	ea.	88102
Tartrazine stain solution	500 mL	ea.	88012
Decolorizing solution	500 mL	ea.	88104

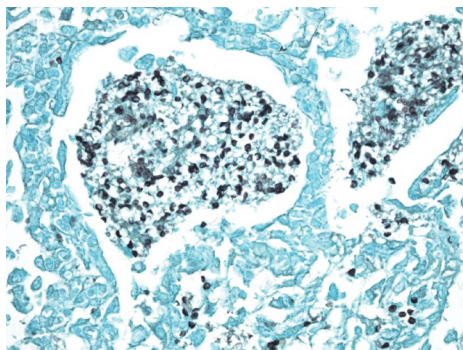


Richard-Allan Scientific Periodic Acid-Schiff (PAS)

Richard-Allan Scientific Periodic Acid-Schiff (PAS) Solution is used to demonstrate the patterns and presence of specific carbohydrates.

- Glycogen, mucin and some basement membranes and fungal walls will stain rose to magenta
- Nuclei stain blue

Description	Size	Qty.	Order Number
PAS kit	1 kit	ea.	87007
Components			
Periodic Acid solution (0.5%)	500 mL	ea.	88016
Schiff reagent	500 mL	ea.	88017
Hematoxylin 1	500 mL	ea.	88018



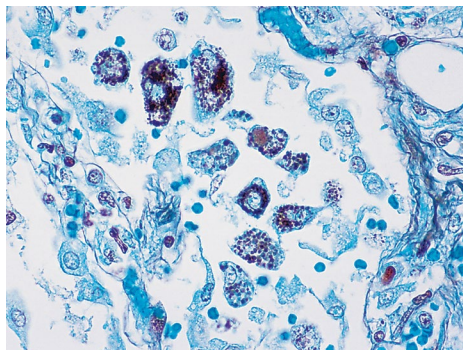
Richard-Allan Scientific Modified Grocott's Methenamine Silver (Chromic Acid)

Richard-Allan Scientific Modified Grocott's Methenamine Silver (Chromic Acid) Kit is a uniquely modified silver stain formulation.

- Utilizes methenamine/borax capsules to make working silver solution
- Distinguishes fungi, basement membranes and opportunistic organisms in tissue sections
- Chromic acid solution will enhance detection of *Pneumocystis carinii*, histoplasmosis and fungus organisms; eliminates non-specific background staining
- Entities and reticular fibers stain black against a green background

Description	Size	Qty.	Order Number
Methenamine Silver (Chromic Acid) stain kit	1 kit	ea.	87024
Components			
Methenamine Borax capsules		12 ea.	88023
Fast Green stain solution	125 mL	ea.	88024
Sodium Thiosulfate solution	500 mL	ea.	88025
Sodium Metabisulfate solution	500 mL	ea.	88042
Gold Chloride solution	125 mL	ea.	88026
5% Chromic Acid solution	500 mL	ea.	88041
5% Silver Nitrate solution*	30 mL	ea.	88021

*Not available for purchase in EMEA

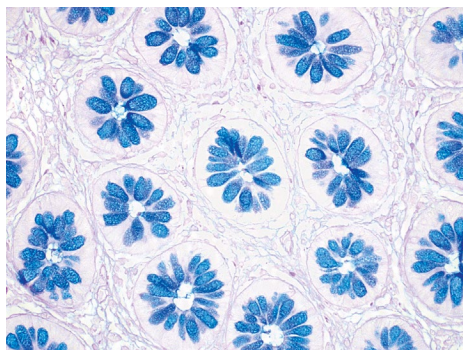


Richard-Allan Scientific Modified Grocott's Methenamine Silver (Periodic Acid)

Richard-Allan Scientific Modified Grocott's Methenamine Silver (Periodic Acid) is a uniquely modified silver stain formulation that utilizes methenamine/borax capsules to make working silver solution.

- Utilizes methenamine/borax capsules to make working silver solution
- Aids in distinguishing fungi, basement membranes and opportunistic organisms such as *Pneumocystis carinii* in tissue sections
- These entities, along with reticular fibers, are stained black

Description	Size	Qty.	Order Number
Methenamine Silver (Periodic Acid) stain kit	1 kit	ea.	87008
Components			
Methenamine Borax capsules		12 ea.	88023
Fast Green stain solution	125 mL	ea.	88024
Sodium Thiosulfate solution	500 mL	ea.	88025
Gold Chloride solution	125 mL	ea.	88026
1% Periodic Acid solution	125 mL	ea.	88027
5% Silver Nitrate solution	30 mL	ea.	88036

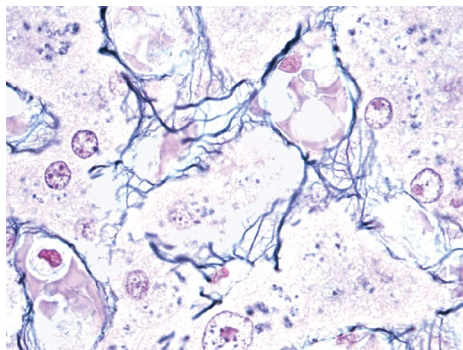


Richard-Allan Scientific Alcian Blue/PAS

Richard-Allan Scientific Alcian Blue/PAS Special Stain Kit is used to demonstrate presence of both neutral and acidic mucosubstances.

- Can be used alone to stain acid mucins and other carboxylated and sulfated acid mucosubstances blue on tissue sections
- Periodic Acid Schiff (PAS) reaction is used to stain glycogen, basement membranes and neutral mucosubstances pink

Description	Size	Qty.	Order Number
Alcian Blue/PAS stain kit	1 kit	ea.	87023
Components			
Alcian Blue pH 2.5 stain solution	500 mL	ea.	88043
0.5% Periodic acid solution	500 mL	ea.	88016
Schiff reagent	500 mL	ea.	88017

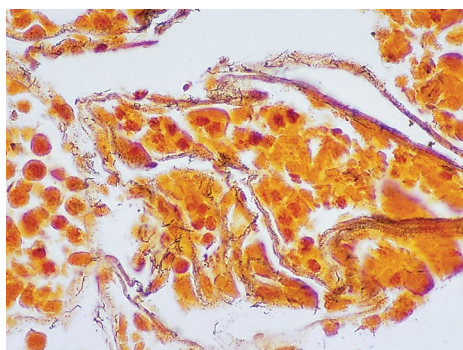


Richard-Allan Scientific Reticulin Silver

Richard-Allan Scientific Reticulin Silver Stain is a Gordon and Sweet's modification that will identify and visualize reticular fibers in tissue sections.

- Working ammoniacal silver solution selectively impregnates and reacts with reticular fibers through multiple reactions, including oxidation and reduction
- Kernechtrot Nuclear Fast Red Stain Solution provides red background stain

Description	Size	Qty.	Order Number
Reticulin Silver stain kit	1 kit	ea.	87025
Components			
Oxalic Acid solution	125 mL	ea.	88045
Potassium Permanganate solution	125 mL	ea.	88046
Ferric Ammonium Sulfate solution	125 mL	ea.	88047
Reducing solution	500 mL	ea.	88048
Gold Chloride solution (0.1%)	125 mL	ea.	88026
Sodium Thiosulfate solution	125 mL	ea.	88025
Kernechtrot Nuclear Fast Red stain solution	125 mL	ea.	88049
10% Silver Nitrate solution	125 mL	ea.	88050
Ammonium Hydroxide solution	8 mL	ea.	88051
Sodium Hydroxide solution (3%)	125 mL	ea.	88052



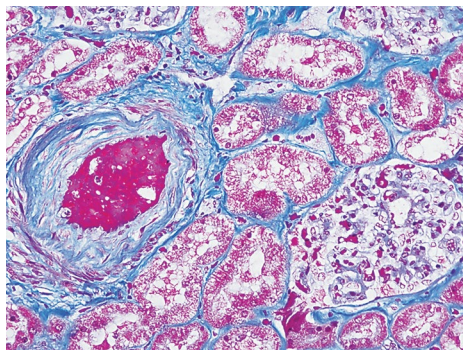
Richard-Allan Scientific Steiner-Steiner Silver

Richard-Allan Scientific Steiner-Steiner Silver Stain determines spirochetes and non-filamentous bacteria.

- Bacteria (including spirochetes and Legionella pneumophila), Donovan bodies and fungi all stain black
- Background is stained yellow to brown
- Kit formulation and detailed procedures provide consistent and reproducible results; kit does not contain uranyl nitrate

Description	Size	Qty.	Order Number
Steiner-Steiner Silver stain kit	1 kit	ea.	87009
Components			
Silver Nitrate solution #2 (dropper)*	8 mL	ea.	88021
Silver Nitrate solution #1	500 mL	ea.	88033
Gum Mastic Solution	500 mL	ea.	88034
Hydroquinone (capsules)	6 / pack	2	88035
Sensitizer solution	500 mL	ea.	88054

*Not available for purchase in EMEA

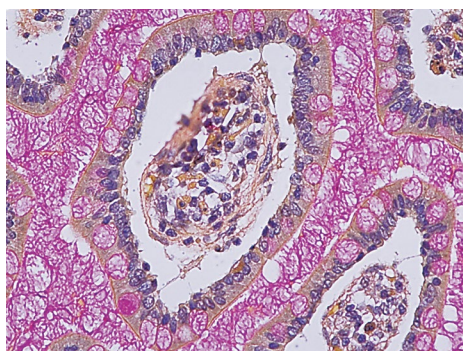


Richard-Allan Scientific Masson Trichrome

Richard-Allan Scientific Masson Trichrome Kit aids in differentiating collagen and smooth muscle in tumors.

- Helps detect diseases of connective tissue and changes in muscle tissue
- Cytoplasm, keratin and muscle fibers are stained red, with collagen and mucin stained blue
- Nuclei are black

Description	Size	Qty.	Order Number
Masson Trichrome stain kit	1 kit	ea.	87019
Components			
Biebrich Scarlet Acid Fuchsin solution	250 mL	ea.	88019
Phosphotungstic-Phosphomolybdic Acid solution	250 mL	ea.	88020
Aniline Blue stain solution	250 mL	ea.	88022
Weigert's Iron Hematoxylin - part A	500 mL	ea.	88028
Weigert's Iron Hematoxylin - part B	500 mL	ea.	88029
Bouin's Fluid	500 mL	ea.	88038
1% Acetic Acid solution	500 mL	ea.	88039

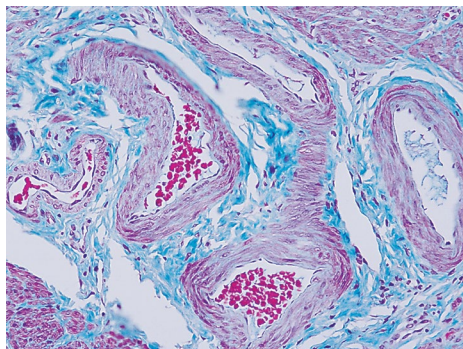


Richard-Allan Scientific Mucicarmin

Richard-Allan Scientific Mucicarmin Stain is useful in the identification of primary tumor sites.

- Aids in distinguishing mucin-negative undifferentiated squamous cell lesions from mucin-positive adenocarcinomas
- Mucin is stained dark rose and the nuclei are black
- Capsule of Cryptococcus (fungus) is stained deep rose
- Tartrazine solution is used as a yellow cytoplasmic stain

Description	Size	Qty.	Order Number
Mucicarmin stain kit	1 kit	ea.	87012
Components			
Tartrazine stain solution	500 mL	ea.	88012
Weigert's Iron Hematoxylin part A	500 mL	ea.	88028
Weigert's Iron Hematoxylin part B	500 mL	ea.	88029
Mucicarmin Stock solution	500 mL	ea.	88037

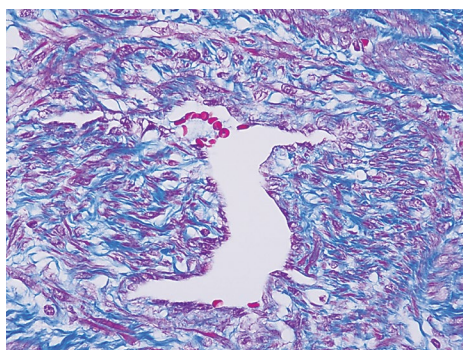


Richard-Allan Scientific Gomori's Trichrome (Green Collagen)

Richard-Allan Scientific Gomori's Trichrome (Green Collagen) is a one-step trichrome stain that provides distinctive red muscle fibers with green collagen staining.

- Used to study the diseases of connective tissue and muscle associated with fibrotic and dystrophic changes

Description	Size	Qty.	Order Number
Gomori's Trichrome (Green Collagen) stain kit	1 kit	ea.	87021
Components			
Weigert's Iron Hematoxylin part A	500 mL	ea.	88028
Weigert's Iron Hematoxylin part B	500 mL	ea.	88029
Gomori's Trichrome stain solution, Green Collagen	500 mL	ea.	88031
Bouin's Fluid	500 mL	ea.	88038
1% Acetic Acid solution	500 mL	ea.	88039



Richard-Allan Gomori's Trichrome (Blue Collagen)

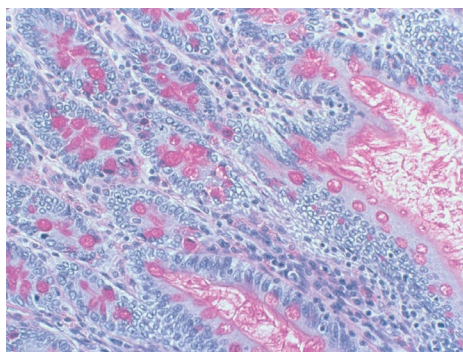
Richard-Allan Scientific Gomori's Trichrome (Blue Collagen) is a one-step trichrome stain that achieves color differentiation similar to the Masson Trichrome with a simple, time-saving procedure.

- Used to study the diseases of connective tissue and muscle associated with fibrotic and dystrophic changes
- Collagen is stained blue, cytoplasm and muscle fibers red and the nuclei blue to black

Description	Size	Qty.	Order Number
Gomori's Trichrome (Blue Collagen) stain kit	1 kit	ea.	87020
Components			
Weigert's Iron Hematoxylin part A	500 mL	ea.	88028
Weigert's Iron Hematoxylin part B	500 mL	ea.	88029
Gomori's Trichrome stain solution, Blue Collagen	500 mL	ea.	88038
Bouin's Fluid	500 mL	ea.	88038
1% Acetic Acid solution	500 mL	ea.	88039

Richard-Allan Scientific Solutions

Description	Size	Qty.	Order Number
Carbol Fuschin-Kinyoun solution (cold technique)	500 mL	ea.	88106
Carbol Fuschin-Kinyoun solution (heat technique)	500 mL	ea.	88107
Carbol Fuschin-Ziehl-Neelsen solution	1 L	ea.	88108
Lugol's Iodine solution (concentrate)	500 mL	ea.	88114



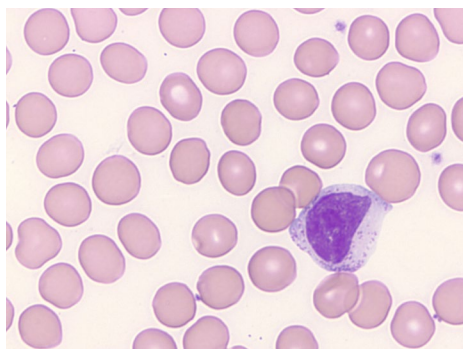
Shandon Periodic Acid Schiff Kit (PAS)

Shandon Periodic Acid Schiff (PAS) is for the demonstration of polysaccharides, neutral mucosubstances and basement membranes.

- Kit components include: 0.5% Periodic acid, Schiff reagent, Potassium metabisulfate, Acidified Harris hematoxylin, Potassium phosphate buffer, Diatase powder

Description	Size	Qty.	Order Number
Periodic Acid Schiff kit	250 mL	ea.	B24200-250

Richard-Allan Scientific Hematology Stains

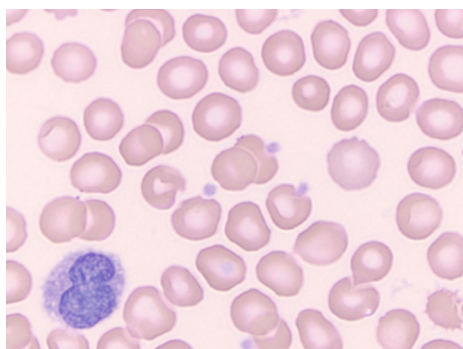


Richard-Allan Scientific Wright Stain

Richard-Allan Scientific Wright Stain is a dual-use stain for peripheral blood and bone marrow smears.

- Produces results similar to those of the Giemsa stain with a slightly greater contrast

Description	Qty.	Order Number
1 gal (3.8 L)	ea.	89010
2.5 gal cubitainer	ea.	89011
0.95 L	ea.	89012

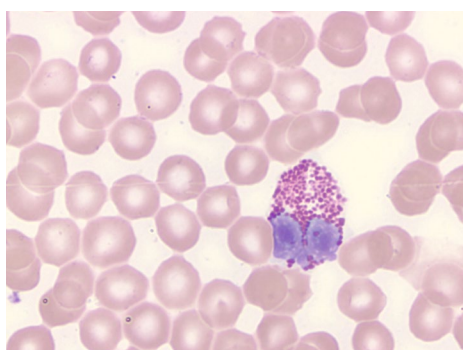


Richard-Allan Scientific Buffered Wright Stain

Richard-Allan Scientific Buffered Wright Stain is a single solution stain containing fixative, buffer and stain for rapid and convenient staining of blood smears.

- Packaged in a 32 oz (0.95 L) bottle for ease of use; suitable for use on automated systems

Description	Qty.	Order Number
32 oz (0.95 L) bottle	ea.	3111

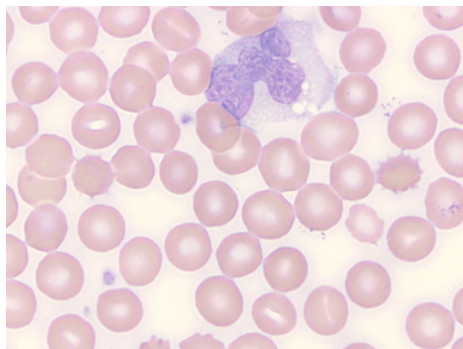


Richard-Allan Scientific Wright-Giemsa Stain

Richard-Allan Scientific Wright-Giemsa Stain is a dual-use stain for peripheral blood and bone marrow smears.

- Produces somewhat darker results compared with Giemsa, particularly in the blue to magenta shades

Description	Qty.	Order Number
32 oz (0.95 L) bottle	ea.	89013
1 gal (3.8 L) cubitainer	ea.	89014
2.5 gal (9.48 L) cube	ea.	89017

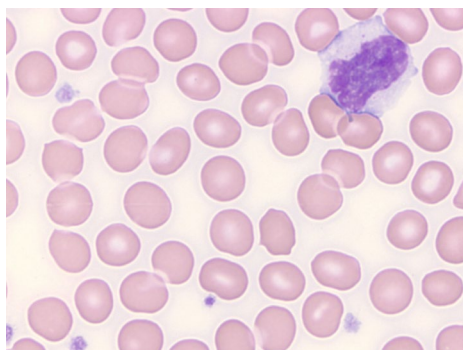


Richard-Allan Scientific Buffered Wright-Giemsa Stain

Richard-Allan Scientific Buffered Wright-Giemsa Stain is a single solution stain containing the fixative, buffer and stain for rapid and convenient staining of blood smears.

- Suitable for use on automated systems

Description	Qty.	Order Number
32 oz (0.95 L) bottle	12 / case	3121



Richard-Allan Scientific May-Grunwald Stain

Richard-Allan Scientific™ May-Grunwald Stain is a classical hematology stain.

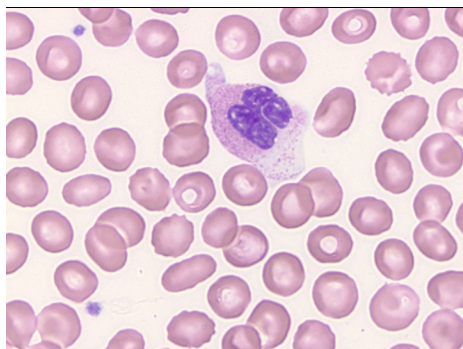
Description	Qty.	Order Number
32 oz (0.95 L) bottle	ea.	89027

Richard-Allan Scientific Reticulocyte Stain

Richard-Allan Scientific Reticulocyte Stain is a specialized hematology stain for identifying immature erythrocytes.

- Immature erythrocytes stain blue in a fine mesh network within the erythrocyte; mature erythrocytes do not stain

Description	Qty.	Order Number
125 mL bottle	ea.	89029

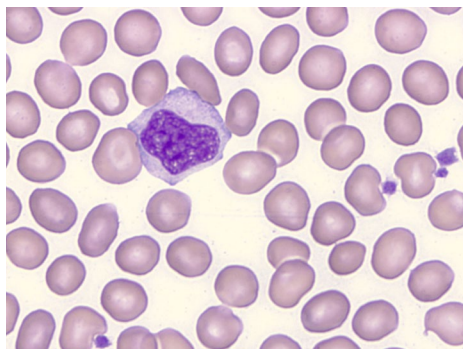


Richard-Allan Scientific Jenner Stain

Richard-Allan Scientific Jenner Stain is used for staining of peripheral blood smears.

- One of the oldest stain formulations still in use today
- Provides results similar to that of Giemsa stain
- Eosinophilic granules tend to appear brighter red, basophilic granules and nuclear chromatin stain a dense blue

Description	Qty.	Order Number
32 oz (0.95 L) bottle	ea.	89030



Richard-Allan Scientific Three-Step Stain

Richard-Allan Scientific Three-Step Stain Set provides results equal to Wright-Giemsa.

- Stain can be used to detect H. Pylori
- Set contains three 500 mL bottles consisting of Fixative
- Package insert provides easy-to-follow instructions
- Components are also available in 1 gallon (3.8 L) containers to facilitate use on automated stainers

Description	Size	Qty.	Order Number
Three-Step stain set	3 x 500 mL	ea.	3300
Components			
Three-Step fixative	1 gal (3.8 L)	ea.	3303
Three-Step solution A	1 gal (3.8 L)	ea.	3313
Three-Step solution B	1 gal (3.8 L)	ea.	3323

Richard-Allan Scientific Phosphate Buffer (6.6, 7.2)

Richard-Allan Scientific Phosphate buffers for use with Giemsa, Wright and Wright-Giemsa stains.

- Each single-use bottle yields 0.26 gallon (1 Liter)

Description	Qty.	Order Number
Phosphate Buffer pH 6.6 (powder) 9.25 g	12/case	89032
Phosphate Buffer pH 7.2 (powder) 9.25 g	12/case	89033

Richard-Allan Scientific Modified Wright and Wright-Giemsa Hematology Stain Packs

Richard-Allan Scientific Modified Wright and Wright-Giemsa Stain Packs are manufactured to fit Hema-Tek™ 1, 1000 and 2000 slide stainers.

- Each pack comes in a convenient sleeve and contains a buffer, rinse and stain

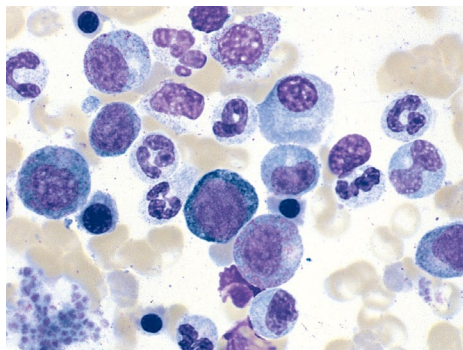


Description	Qty.	Order Number
Modified Wright stain pack	5 / pk	3000
Modified Wright-Giemsa stain pack	5 / pk	3005
Stain Pack Accessories		
Pump tube set (3 / pk)	8 / case	3010
Cannula set (3 / pk)	16 / case	3011
Under platen tubing (3 / pk)	8 / case	3012

Dry Powder Stains

Certified by the Biological Stain Commission.

Description	Qty.	Order Number
Wright stain 100 g	ea	90049



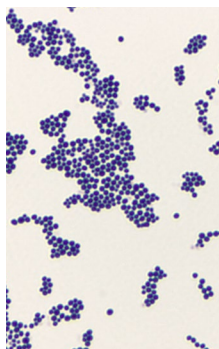
Shandon Kwik-Diff Stains

Shandon™ Kwik-Diff™ Stains are a quick alternative to traditional Wright's and Giemsa Staining procedures.

- Fast three-step differential stain for bone marrows, smears, FNAs and microorganisms such as *Helicobacter pylori*
- Kit components include: Reagent 1, Fixative; Reagent 2, Eosin; Reagent 3, Methylene Blue
- Available in kit form or as individual components

Description	Size	Order Number
Kwik-Diff stain kit	480 mL	9990700
Kwik-Diff stain kit	120 mL	9990701
Components		
Kwik-Diff Reagent 1, Fixative	1.06 gal (4 L)	9990705
Kwik-Diff Reagent 2, Eosin	1.06 gal (4 L)	9990706
Kwik-Diff Reagent 3, Methylene Blue	1.06 gal (4 L)	9990707

Microbiology Stains and Reagents



Richard-Allan Scientific Gram Stain Kit (Film)

Richard-Allan Scientific Gram Stain Kit (Film) provides qualitative differential staining of bacteria from cultures and patient specimens using a modified Hucker Gram stain method.

- Gram-positive microorganisms are stained purple and the Gram-negative bacteria stain pink to red

Description	Size	Qty.	Order Number
Gram stain kit (film)	1 kit	ea.	87101
Components			
Crystal Violet solution	500 mL	ea.	88101
Gram's Iodine solution	500 mL	ea.	88102
Safranin O stain solution	500 mL	ea.	88103
Decolorizing solution	500 mL	ea.	88104
Sodium Bicarbonate solution	8 mL	ea.	88116

Richard-Allan Scientific Microbiology Reagent

Description	Size	Qty.	Order Number
Decolorizing solution	500 mL	ea.	88104

Shandon Gram Stain

Shandon Gram stain can be used as routine bacteriologic stain on fixed smears and histological slides.

- Based upon the popular Hucker modification
- Demonstrates the presence of microorganisms such as bacteria and differentiates between Gram-positive and Gram-negative bacteria
- Safranin O provided as a counterstain
- Available in kit form or as individual components
- Kit components include: Crystal Violet Stain, Gram's Iodine (stabilized),

Description	Size	Order Number
Gram stain kit	125 mL	9990721
Gram Crystal Violet stain	1.06 gal (4 L)	9990725

Shandon Portable Staining Kits



Shandon Rapid-Chrome Papanicolaou Staining Kit

Shandon™ Rapid-Chrome™ Papanicolaou Staining Kit is excellent for rapid results of fine needle aspirations or high-risk specimens.

- Contains a five-slide holder and a portable tray
- Kit components include: Gill 2 Hematoxylin, bluing reagent, EA-50, 100% alcohol, OG-6, 95% alcohol, xylene and mounting medium, and one five-slide staining grip
- Packaged in 120 mL glass jars with screw top lids. 60ml reagent fill level
- 9 x 25 x 3.75 in. (22.8 x 63.5 x 9.5 cm)



Shandon Rapid-Chrome H&E Frozen Section Staining Kit

Shandon Rapid-Chrome H&E Frozen Section Staining Kit produces permanently stained slides. It includes Rapid-Fixx™, an economical, alcohol-based formalin ideal for fixing slides from frozen sections.

- Kit components include: Rapid-Fixx fixative, deionized water, Eosin-Y, xylene, Gill 3 Hematoxylin, bluing reagent, 100% alcohol and mounting medium, and five slide staining grips
- Packaged in 120 mL glass jars with screw top lids, 60 mL reagent fill level
- 9 x 18 x 4.75 in. (22.8 x 45.7 x 12 cm)



Shandon Rapid-Chrome Kwik-Diff Staining Kit

Shandon™ Rapid-Chrome Kwik-Diff™ Staining Kit is specially configured for performing quick, high-quality differential stains.

- Ideal for FNA carts
- Packaged in 120 mL glass jars with screw top lids, 60 mL reagent fill level
- Kit components include: Fixative, Methylene Blue, Eosin, spill-free slide jar, one plastic slide grip, Superfrost slides, 24 x 50, No. 1 Coverslip, resin mount mountant, and one cardboard slide folder
- 9 x 18 x 4.75 in. (22.8 x 45.7 x 12 cm)

Description	Qty.	Order Number
Papanicolaou stain kit	ea.	9990020
H&E frozen section stain kit	ea.	9990001
Kwik-Diff staining kit	ea.	9990702