

# Richard-Allan Scientific Cytology Stains



## Signature Series Cyto-Stain

Richard-Allan Scientific™ Signature Series Cyto-Stain™ is a uniquely formulated cytoplasmic stain that produces results similar to conventional Papanicolaou stains.

- Cyto-Stain provides a full range of familiar cytoplasmic colors and allows the user control over the staining intensities
- Cyto-Stain G is a modification to produce greener cyanophilic hues in intermediate and basal cells
- Use for all gynecological and non-gynecological procedures
- Cost-effective because user performs only one counterstain, not two
- Reduces staining time

Description	Qty.	Order Number
<b>Cyto-Stain</b>		
1 pint (0.47 L)	4 / case	7511
1 gal (3.8 L)	ea.	7501R
<b>Cyto-Stain G</b>		
1 gal (3.8 L)	ea.	7501G

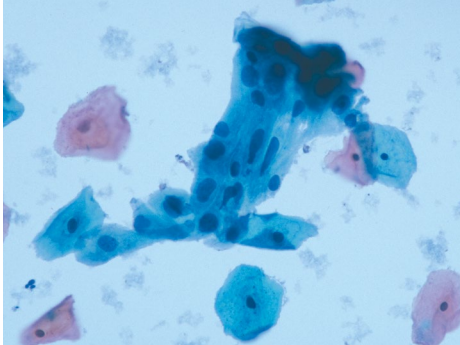
## Signature Series Cyto-Stain

Richard-Allan Scientific Papanicolaou Stain OG-6 stains are used to stain keratinized areas of the cell.

- Modified OG is a Gill modification that minimizes precipitation and reduces staining time
- Use OG stains with EA-36 or EA-50 when staining gynecological specimens
- Use OG stains with EA-65 for staining non-gynecological specimens

Description	Qty.	Order Number
<b>OG-6</b>		
1 pint (0.47 L)	4 / case	75204
1 gal (3.8 L)	ea.	75211
2.6 gal cube (9.5 L)	ea.	75225
<b>Modified OG</b>		
1 gal (3.8 L)	ea.	75311

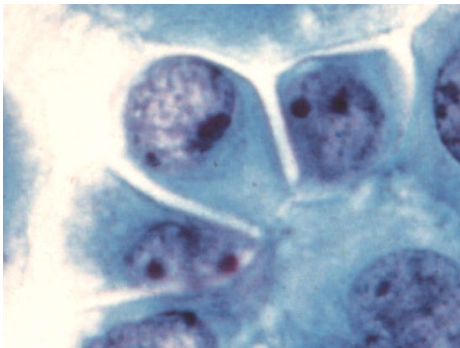
## Shandon Cytology Stains



### Shandon EA-50 Stain

- Clearly differentiates cellular components with pink, green and blue-green hue
- Polychromatic cytoplasmic stain

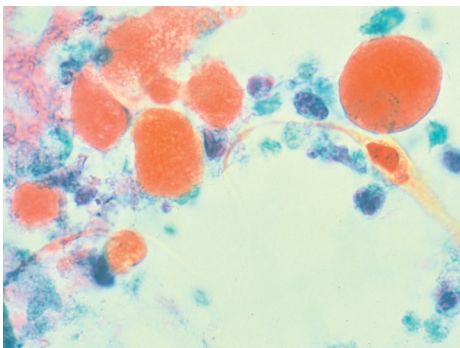
Description	Qty.	Order Number
1 L (0.26 gal)	2 / case	6766001
4 L (1.06 gal)	ea.	6766002



### Shandon EA-65 Stain

- Clearly differentiates cellular components with pink, green and blue-green hue
- Polychromatic cytoplasmic stain
- Lower concentration of light green improves expression of eosin-stained components

Description	Qty.	Order Number
1 L (0.26 gal)	2 / case	6766003
4 L (1.06 gal)	ea.	6766004



### Shandon OG-6 Stain

- Demonstrates keratin in cytoplasm

Description	Qty.	Order Number
1 L (0.26 gal)	2 / case	6766005
4 L (1.06 gal)	ea.	6766006